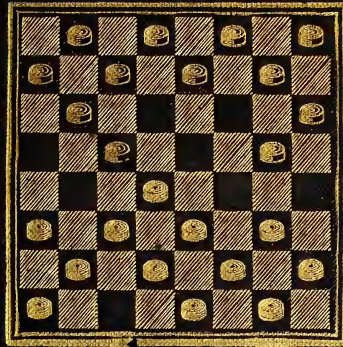


DRAUGHTS.

ALMA



GAME.

GV
1463
B15

Baker & Reed.


LIBRARY OF CONGRESS.

GV1463

Chap. _____ Copyright No. _____

Shelf, B15

UNITED STATES OF AMERICA.



Please notify me of all errors and improvements you may discover in the following pages, so that they may be embodied in the next edition.

470 S. Ashland Avenue,
Chicago.

E. T. BAKER.

THE
GAME OF DRAUGHTS.

THE ALMA OPENING,

EMBRACING

THE GAMES FIRST PUBLISHED BY

MR. JOHN DRUMMOND, WITH CORRECTIONS AND ADDITIONS BY THE BEST
ANALYSTS AND PLAYERS DOWN TO THE PRESENT TIME;

CONTAINING UPWARDS OF

FIVE HUNDRED VARIATIONS.

COMPILED AND ARRANGED BY

E. T. BAKER.

REVISED AND CORRECTED BY

JAMES P. REED.

15
4558

MS. 17.888
7129 I

G. V. 1463
. B. 5



Entered according to Act of Congress, in the year 1888, by

E. T. BAKER,

In the office of the Librarian of Congress, at Washington, D. C.





PREFACE.

IT has been our aim, in preparing this work for the checker-playing public, to make it as complete as possible, and present it in such a form that both the learner and advanced student can in a few moments ascertain the sound or best play and what moves lead to a loss without the necessity of frequently turning over the pages.

We do not assume any responsibility for the soundness of any of the games, but have taken them as they were published, giving the drawn games precedence, and giving credit, as far as possible, to the authors of the different games.

We shall take pleasure in correcting any mistakes in this respect, and to add any corrections to the games that may be sent us, should a second edition be issued.

The "Alma" opening has been selected because of the great interest recently shown in it and because it is comparatively little known by the majority of players.

We have taken the liberty of including in the work some play which originally appeared under the head of the "Whilter" opening, because in the main it has never appeared in book form, and for the reason that it comes up just as readily under the "Alma" opening.

We desire to acknowledge our gratitude and indebtedness to Mr. Charles Hefter for the valuable aid rendered in

giving us the use of his large collection of works and papers relating to the game.

Referring to the fifth move of the game the *New England Checker Player* said: "This move forms the *Alma*; it is usually classed as Whilter by those who stick to Anderson's names, but as Drummond published 240 variations on the 3-8 move, we think he is entitled to the name."

If this little work will encourage the study and increase the knowledge of this fascinating and scientific game, which deserves to become still more popular, we shall feel that we have not labored in vain.

THE PUBLISHERS.

CHICAGO, ILL.

February, 1888.



REFERENCE BOARD.

SHOWING THE NUMBERS OF THE SQUARES.

(WHITE.)

	32		31		30		29
28		27		26		25	
	24		23		22		21
20		19		18		17	
	16		15		14		13
12		11		10		9	
	8		7		6		5
4		3		2		1	

(BLACK.)

At the commencement of a game the black men occupy the squares numbered from 1 to 12; the white men those 21 to 32. *Black always moves first.*

EXPLANATION.

The moves of the games run down the column; the left hand numbers indicate the squares *from* which, and the right hand numbers the squares *to* which the pieces are moved.

The variations are numbered consecutively at the top of the page, and the numbers that refer to them follow each other in succession down the

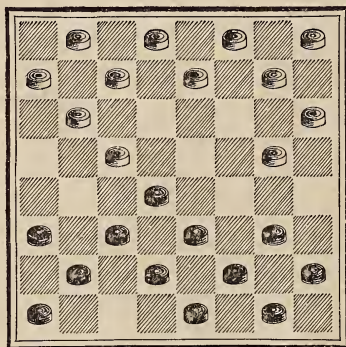
column; thus 1 leads to variation 1, and so on. The brace has its central point to the move at which the variation occurs.

The moves of black are distinguished by the small dash between the figures.

At the left of the figures denoting the variations the letters D, B or W are placed, to show the result of the corresponding variation; D indicating a draw, B a black win, and W a white win.

The names at the bottom of the columns show by whom they have been played, and, where two names are given, that the first named played with the blacks.

The numbers at the bottom of the columns show whence such variations branch.



THE "ALMA" OPENING.

GAME.	1	2	3	4	5
11-15	9-14	17 13	17 14	26 23	15-18
23 19	25 22 D	32 } 11-16	9-18 D	41 11-16	22 15
8-11	3- 8 W	33 } B 38	21 17 B	42 17 14	11-18
22 17 D	24 26 23 D	34 } 25 22	18-22	9-18	17 13
D 1 3- 8 W	25 5- 9	16-23	25 18	23 14 W	49 } 8-11
D 2	17 13 D	35 } 26 19	15-22	16-23 W	50 } 19 15
B 3 } 25 22	11-16	7-11 B	39 26 23	27 11	10-19
D 4	D 26 29 25	22 17	5- 9	10-17	24 8
W 5 11-16	7-11	9-14	17 13	21 14	4-11
D 6	31 26 B	36 } 31 26	11-15 B	43 } 8-15	28 24
D 7 } 26 23	1- 5 B	37 } 11-16 B	40 23 18 B	44 } 30 26	11-15
D 8	D 27 22 17	26 22	1- 5 B	45 } 6- 9	29 25
D 9 7-11	D 28 2- 7	16-23	18 11	26 22	12-16
D 10	D 28 25 22	27 11	7-23	9-18	24 19
B 11	16-20	8-15	27 18	24 19	15-24
D 12 } 31 26	23 18	24 19	9-14	15-24	27 11
D 13	14-23	15-24	18 9	22 15	7-16
D 14	27 18	28 19	5-14	4- 8	26 22
D 15 9-14	20-27	4- 8		28 19	9-14
B 16 29 25	32 23	30 26		7-11	22 15
D 17 16-20	15-24	8-11		15 10	6- 9
19 16	28 19	29 25		11-16	13 6
12-19	11-16	5- 9		B 46 19 15	1-19
23 7	17 14	26 23		D 47 16-19	25 22
2-11	10-17	12-16		D 48 25 22	16-20
D 18 26 23	21 14	19 12		19-23	31 26
D 19 5- 9	8-11	11-15		22 18	2- 6
17 13 B	29 22 17	12 8		12-16	22 17
D 20 15-18 W	30 16-20	15-18		29 25	6-10
22 15 B	31 19 15	22 15		16-20	17 13
10-26	4- 8	10-26		25 22	10-15
30 23	23 19	17 10		23-26	13 9
11-15	11-16	6-15		15 11	15-18
25 22	26 23	13 6		8-15	9 6
6-10	20-24	1-10		18 11	19-24
13 6	30 25	25 22		26-30	6 2
15-18	24-27			22 18	24-27
22 15	25 21			30-25	32 23
10-26	27-31				18-27
6 2	14 10				26 22
26-31	7-14				
D 21 27 23	17 1				
20-27	9-14				
D 22 } 2 7	18 9				
D 23 } 8-11	5-14				
7 16	1 6				
14-18	31-27				
23 14	6 9				
31-26	27-11				
32 23	9 18				
26-12	16-23				
14 10	18 27				
12-16	11-15				
Drawn.	Drawn.	Drawn.	B. wins.	Drawn.	W. wins.
		J. P. Reed.	E. T. Baker.	Drummond.	Swan and Adamson.
0	0	0	0	0	0

6	7	8	9	10	11	
24 20	D 55	27 23	29 25	8-11	17 13	23 18
16-23	W 56	16-20	B 63 16-23	B 66 31 26	9-14	16-23
27 11	D 57	32 27	27 11	B 67 16-20	B 68 24 20	75
7-16	D 58	7-11	8-15	B 68 29 25	B 75 15-24	B 76 17 13
20 11	D 58	19 16	24 19	11-16	B 77 28 19	B 77
8-15		12-19	15-24	17 14	11-15	10-14
26 23		23 7	28 19	9-18	20 11	B 78
15-19		2-11	4- 8	23 14	B 79 15-24	B 79 24 19
23 16	D 59	30 25	17 14	16-23	B 80 27 20	B 80 15-24
12-19	D 60	D 64 10-17	10-17	27 11	8-15	28 19
B 51 31 27	D 61	11-16	21 14	D 69 20-27	B 70 22 18	2- 7
B 52 9-14	W 62	17 14	9-18	B 71 32 23	B 71 15-22	B 81 29 25
27 23		10-17	22 15	B 72 10-17	30 26	7-10
19-26		22 13	7-11	21 14	2- 7	18 15
30 23		9-14	26 22	7-16	26 17	11-18
4- 8		25 22	11-18	23 19	7-11	22 15
32 27		14-18	22 15	16-23	29 25	8-11
6- 9		22 17	2- 7	26 19	4- 8	15 8
B 53 17 13		16-19	31 26	4- 8	25 22	4-11
D 54 2- 7		17 14	7-11	22 18	11-15	27 18
13 6		8-11	26 22	8-11	32 28	14-23
14-18		14 10	11-18	25 22	5- 9	
23 14		18-23	22 15	D 73 11-16	B 74 23 19	
10-26		27 18	5- 9	B 74 19 15	15-24	
6 2		20-27	25 22	16-19	8-11	
8-11		31 24	9-14	14 10	20 16	
29 25		15-31	32 27	19-23	11-20	
26-30		24 8	6-10	10 7	31 27	
27 24		4-11	15 6	2-11	14-18	
1- 6		10 7	1-10	15 8	22 15	
2 9		31-27	D 65 27 23	23-27	12-16	
5-14		29 25	8-11		19 12	
25 22		11-15	22 18		10-19	
		21 17	14-17		12 8	
		15-19	18 14		9-14	
		25 21	11-15		17 10	
		27-23			6-15	
		7 2			8 3	
		5- 9			15-18	
					3 7	
					19-24	
					13 9	
Drawn.	Drawn.	Drawn.	Drawn.	Drawn.	B. wins.	
Drummond.	Drummond.	R. Frazer.	J. Wyllie, v. J. Scott.	J. Macfarlane.	J. Roll.	
0	0	0	0	0	0	

12	13	14	15	16	17
24 20	30 26	29 25	16-20	17 13	5- 9
15-24	15-18	9-14	19 16	6- 9	17 13
28 19 B 87	23 7 D 92	24 20	12-19	13 6	1- 5
11-15	16-30	15-24	23 7	2- 9	22 17
20 11	31 26	28 19	2-11 B	A 22 17	2- 7
15-24	30-23	11-15 D 97	17 13	9-13	25 22
27 20	27 18	20 11	9-14	26 22	16-20
8-15	11-15	15-24 B 98	22 17	5- 9	23 18
B 82 30 26	18 11	27 20	8-12	30 25	14-23
15-19	8-15	8-15 B 99	29 25	1- 5	27 18
23 16	7 3 D 93	30 26	11-16		20-27
12-19	9-13 D 94	4- 8	26 23		32 23
B 83 { 17 13	17 14	20 16	16-19		15-24
B 84 { 4- 8 D 88	12-16	12-19	23 16	A	28 19
20 16 B 89	14 10	23 16	12-19		11-16
8-11	16-20	8-11	25 22	21 17	17 14
16 7 B 90	32 27	16 7	4- 8	14-21	10-17
2-11	2- 7	2-11	22 18	23 18	21 14
B 85 22 18 B 91	3 8 D 95	26 23	15-22	16-23 D	A 8-11
10-15	7-14	11-16	24 15	26 19	30 25
B 86 26 23	8 12	31 26	10-19	9-14	16-20
19-26	6-10	5- 9	17 10	18 9	25 21
31 22	12 16	17 13	6-15	5-14	20-24
15-19	1- 6	15-18	27 24 B	B 22 17 B 100	19 15
29 25	29 25	22 15	20-27	1- 5	12-16
11-16	5- 9	10-19	32 16	30 26	15 8
18 14	16 19 B 96	25 22		5- 9	4-11
9-18	4- 8	1- 5		17 13	14 10
22 15	19 16	22 17		11-16	7-14
19-23	8-12	14-18			22 17
15 11	16 14	23 14			24-27
23-26	14-18	9-18			17 1
11 7	19 23	17 14			27-31
26-31	9-14	16-20		B	13 6
25 22	23 14	32 27			31-15
31-26	6- 9	19-24		27 23	
22 17	19 23	27 23		11-16	
26-22	12-16	18-27		22 17	
7 2	24 1	26 22		1- 5	
	15-2			32 27	A
	22			8-11	Same as
				30 26	Var. 1
				14-18	at
				23 7	27th move.
				16-32	
Drawn.	Drawn.	Drawn.	Drawn.	B. wins.	Drawn.
J. Macfarlane.	Gunner.	Drummond.	Drummond.	Drummond.	
0	0	0	0	0	0

18	19	20	21	22	23
17 13	8-12	8-12	2 7	B 116 } 1- 6	8-12
8-12	B 106 23 19	23 19	1- 6	D 117 } 7 2	D 120 7 10
26 23	4- 8	14-18	7 3	D 118 } 6-10	D 121 12-16
B 101 } 4- 8	17 13	19 16	8-12	D 119 } 2 7	10 17
D 102 } 23 19	15-18	12-19	3 7		D 122 31-26
	15-18	27 23	6- 9		7 11
	22 15	11-18	7 11		D 123 16-20
	11-18	30 26	9-13		11 4
	19 16	10-15	20-27		12-16
	12-19	19 10	D 112 } 7 2		14-18
	24 15	6-15	D 113 } 7 2		28 24
	10-19	26 23	W 114 } 15-18		10-15
	B 109 } 5- 9	22 15	4- 8		32 28
	27 24	13 6	2 6		16-20
	20-27	10-19	18-22		4 8
	32 16	1-10	21 17		15-18
	18-23	21 17	27-31		21 17
B 103	16 12	14-30	17 14		14-21
	8-11	23 7	9-18		23 14
	12 8	8-11	2 9		27-32
	11-15	7 3	18-23		24 19
	8 3	11-16	9 14		20-24
	15-18	3 7	31-27		
D 104	3 7	30-26	14 10		
	23-26	B 110 } 7 2	4- 8		
	30 23	26-22	13 9		
	18-27	2 6	27-24		
	28 24	15-18	9 6		
	27-31	B 111 } 6 2	23-27		
	24 19	22-17	30 26		
	31-26	2 7	27-31		
	19 16	17-14		D 115	
	26-30	7 11		20-27	
B 105	7 11			11 20	
				26-19	
				32 16	
				12-19	
Drawn.	Drawn.	Drawn.	Drawn.	Drawn.	Drawn.
Drummond.	Drummond.	Allen v. Robinson.	Williams v. Summers.	H. Z. Wright v. Shaefer.	Hehner v. Freeman.
0	0	0	0	0	0

24 ✓	25	26 ✓	27	28 ✓	29
17 13	11-16	24 20	21 17	26 22	19 15
11-16	22 18	15-24	14-21	w 131 16-20	16-19
22 17	15-22	20 11	23 18	23 18	23 16
16-23	19 15	8-15	16-23	14-23	12-19
26 19	10-26	28 19	26 19	27 18	15 8
w 124 7-11	17 3	15-24	D 128 11-16	20-27	4-11
27 23	5- 9	27 20	18 11	32 23	22 17
11-16	30 23	1- 5	w 129 16-23	15-24	19-24
24 20	w 125 2- 7	22 18	27 18	28 19	B A 30 25
15-24	3 10	4- 8	8-15	11-16	11-15
28 19	6-15	32 28	18 11	30 26	18 2
5- 9	24 19	8-11	9-14	8-11	9-18
20 11	15-24	31 26	22 17	17 14	2 9
8-24	28 19	14-17	14-18	10-17	5-30
32 28	w 126 1- 6	21 14	24 19	21 14	
4- 8	21 17	10-17	w 130 6- 9	16-20	
28 19	6-10	29 25	13 6	19 15	
8-11	17 13	7-10	2- 9	12-16	A
30 26	9-14	25 22	17 13	15 8	
11-16	13 9	9-14	9-14	4-11	26 22
29 25	8-11	18 9	11 7	25 21	24-27
14-18	9 6	5-14	18-23	20-24	30 25
23 7	22-26	28 24	7 2	14 10	27-31
16-30	31 22	11-15	23-26	7-14	18 15
7 3	11-15	23 19		22 17	11-18
9-14	27 24	w 127 17-21		24-27	22 15
17 10	16-20	22 17		17 1	9-18
6-15	6 2	2- 7		27-31	
3 8	20-27	20 16		13 6	
15-19	32 28	14-18		31-15	
8 11	15-24	16 11			
19-24	28 19	7-23			
11 15	27-31	26 19			
24-28	2 7				
15 10	31-26				
28-32	22 18				
13 9	26-22				
32-28	18 9				
25 22	10-14				
30-25	9 5				
22 17	22-26				
25-22	5 1				
17 13	26-31				
28-24	7 10				
9 6	14-17				
2- 9	23 18				
13 6	31-26				
12-16	19 15				
6 2	26-23				
16-19	10 14				
2 6					
19-23					
6 9					
Drawn.	W. wins.	Drawn.	Drawn.	Drawn.	B. wins.
J. Wyllie v. W. R. Barker.	Anderson.	J. McDonald v. D. G. McKelvie.	J. P. Reed.	J. P. Reed.	Anderson.
1	1	1	1	1	1

30 ✓	31 ✓	32	33	34	35
4- 8	26 22	9-14	15-18	26 23	27 11
19 15	20-24	25 22	24 20	7-11	8-15
16-19	19 15	11-16	11-15	B 134 25 22	D 135 29 25
23 16	12-16	27 23	28 24	9-14	4- 8
12-19	15 8	16-20	8-11	B A 29 25	D 136 24 19
26 22	4-11	32 27	25 22	16-20	15-24
19-23	30 25	7-11	18-25	31 26	28 19
15 10	11-15	19 16	29 22	11-16	7-11
6-15	18 2	12-19	4- 8	21 17	26 23
13 6	9-27	23 7	22 17	14-21	11-15
15-19	2 9	2-11	15-18	23 18	32 27
6 2	5-30	B 132 24 19	30 25	16-23	15-24
8-12		15-24	9-14	18 11	27 20
2 6		28 19	19 15	8-15	10-15
11-16		8-12	10-28	27 11	30 26
6 10		27 23	17 8	20-27	15-19
7-11		11-15	18-23	32 23	23 16
10 15		19 16	26 19	12-16	12-19
		12-19	2- 7	22 17	20 16
		23 16	3 10	16-20	8-11
		v 133 14-18	6-24	25 22	16 7
		22 17	21 17	10-15	2-11
		18-25	5- 9	23 18	21 17
		26 19	13 6	15-19	9-14
		15-24	1-10	18 15	17 10
			25 22	20-24	6-15
			10-15	15 10	31 27
			17 14	6-15	5- 9
			15-18	26 23	13 6
			22 15	19-26	1-10
			11-18	28 10	25 21
			14 10	26-31	10-14
			18-22	10 7	27 23
			27 23	31-27	11-16
				7 3	22 17
				27-24	15-18
				3 7	
				24-19	
				7 3	
				1- 6	
				11 7	
				2-11	
				17 14	
				11-16	
				22 17	
				A	
				B 136 loses.	
				See	
				Var. 113.	
W. wins.	B. wins.	Drawn.	W. wins.	Drawn.	Drawn.
Anderson.	Anderson.	J. T. Denvir.	J. P. Reed.	Wyllie v. Donville.	R. Frazer.
1	1	2	2	2	2

36	37	38	39	40	41	
	27 23	29 25	26 23	27 23	24 20	9-14
	15-18	14-18	6- 9	6- 9	15-24	25 22
	32 27	17 14	23 14	32 27	28 19	5- 9
	18-22	10-17	9-18	9-14	7-11	17 13
B 137	30 26	21 14	27 23	17 13	27 24	11-16
	11-15	18-23	18-27	1- 6	9-14	29 25
	19 16	19 10	32 23	26 17	32 28	16-20
	12-19	6-15	11-16	14-21	14-17	31 26
	23 16	27 18	25 22	29 25	30 26	8-11
	8-12	15-29	16-20	10-14	11-15	19 16
B 138	27 23	14 10	22 17	31 26	19 16	12-19
	12-19	11-15	20-27	6-10	12-19	23 16
	23 16	24 19	31 24	25 22	23 16	14-18
	22-25	15-25	7-11	11-15	8-12	26 23
	29 22	28 19	17 14	22 17		1- 5
	14-18	8-11	10-17	7-11		23 14
	16 11	31 26	19 10	13 9		10-26
	18-25	11-15	17-22	11-16		30 23
	26 23	32 28	10 7	9 6		9-14
	25-30	15-24	22-26	2- 9		16 12
	23 19	28 19	7 3	17 13		11-16
	5- 9	4- 8	26-31	14-17		23 19
	19 16	26 23	24 20	13 6		16-23
	15-19	8-11	31-27	15-18		27 9
	24 15	10 7	23 19	23 7		5-14
	10-19	5- 9	11-16	16-32		25 22
	16 12	13 6	20 11	7 3		20-27
	19-24	1-10	8-24	32-27		32 23
	28 19		28 19	24 20		6-10
	9-14			27-31		22 17
	17 10			26 23		7-11
	6-24			31-27		23 19
				23 19		15-24
				17-22		28 19
						2- 6
						12 8
						11-15
						8 3
						15-24
						3 7
						24-27
						7 2
						14-18
						2 9
						18-23
B. wins.	B. wins.	B. wins.	B. wins.	B. wins.	Drawn.	
J. T. Denvir.	Drummond.	E. La Rue.	E. La Rue.	E. La Rue.	F. Greenlee v. J. Labadie.	
2	2	3	3	3	4	

48	49	50	51	52	53
31 27	7-11	9-14	29 25	32 27	23 19
12-16	26 23	29 25	10-15	10-15	8-11
25 22	2- 7	5- 9	32 27	30 26	27 24
16-20	23 14	26 23	4- 8	6-10	9-13
D 151 29 25	10-17	1- 5	27 23	27 24	24 20
19-24	21 14	30 26	19-26	1- 6	5- 9
27 23	9-18	14-17	30 23	31 27	19 16
24-27	24 20	21 14	9-13	4- 8	1- 5
15 11	6-10	10-17	23 19	17 13	16 7
8-15	30 26	23 14	15-24	9-14	2-11
23 18	10-14	9-18	28 19	22 17	28 24
27 31	29 25	26 22	8-11	2- 7	11-15
18 11	1- 6	17-26	17 14	29 25	20 16
	25 21	31 15	11-15	8-11	14-18
		5- 9	19 10		24 20
		25 22	6-15		18-25
		7-10	14 10		29 22
		27 23	5- 9		9-14
		2- 7	31 27		
		23 18	9-14		
		7-11	27 24		
		32 27	1- 5		
		11-16	24 20		
		27 23	15-19		
		16-20	20 16		
		22 17	19-23		
			B 153 22 18		
			23-26		
			18 9		
			5 14		
			16 11		
			26-30		
			11 8		
			30-26		
			8 4		
			14-18		
			4 8		
			26-22		
Drawn.	W. wins.	W. wins.	B. wins.	B. wins.	B. wins.
J. Macfarlane.	Swan v. Adamson.	Swan v. Adamson.	J. Macfarlane.	J. P. Reed.	Drummond.
4	5	5	6	6	6

54	55	56	57	58	59
10-15 D 157	7-11	8-11	8-11	22 18	26 23
13 6 D 158	24 20	24 20	19 16	15-22 W 180	} 9-14
1-10 D 159	15-24	15-24	12-19 D 178	19 16 W 181	
22 17 W 160	28 19	28 19	23 16	12-19 D 182	} 30 25
5- 9 W 161	10-14	9-13 D 170	9-13	24 15 D 183	
17 13 W 162	17 10	22 18 D 171	26 23	11-18 D 184	} 15-18
8-11	6-24	13-22 W 172	5- 9	23 7	
13 6 D 163	22 18	26 17 B 173	23 18	2-11	22 15
2- 9 D 164	} 1- 6	6- 9 D 174	1- 5 D 179	17 13	10-26
27 24 D 165		17 14 D 175	31 26	11-15	31 22
9-13 D 166	21 17	10-17	9-14	26 17	5- 9
23 19 D 167	6-10	21 14	18 9	8-11	17 10
14-18 D 168	17 13	9-13	5-14	30 26	6-15
24 20	24-27	29 25	26 23	4- 8 B 185	21 17
15-24 W 169	13 6	13-17 W 176	6- 9	29 25	11-16
28 19	2- 9	25 21	30 26	15-19	22 18
11-15	31 24	1- 6	2- 6	27 23	15-22
19 16	10-15	14 9	29 25	19-24	25 18
10-14	26 22	5-14	15-18	28 19	9-13
16 11	15-19	18 9	22 8	9-14	17 14
18-22	24 15	6-13	13-31	17 10	13-17
11 7	9-14	21 14	8 3	6-24	14 10
15-18	18 9	13-17	9-13	23 18	17-22
7 2	11-27	14 9 D 177	23 19	24-27	10 7
22-26	9 5	17-22	14-18	31 24	22-26
2 6	8-15	7-10	19 15	20-27	7 3
26-31	5-14	5 1	10-19	18 14	8-12
B 156 6 9	10-14	24 15	31-24	27-31	3 7
31-26	1 5	28 19	31-27	26 22	26-30
20 16	14-17		22 17	31-27	18 15
26-23	32 27		27-23	14 10	
16 11			11-15	17 14	
23-19			15-18	21 17	
11 7			23-19	10 7	
19-15			19-15	25 21	
7 2			15-11	7 2	
15-10			8-12	14 9	
9 5			5-14	17 10	
18-22					
5 9					
Drawn.	Drawn.	W. wins.	Drawn.	Drawn.	Drawn.
E. T. Baker.	J. McFarlane.	Swan and Adamson.	Jas. Wyllie.	Geo. Ritchie v. A. Forbes.	Drummond.
6	7	7	7	7	7

60	61	62	63	64	65
29 25	9-14	9-18	26 19	9-18	30 26
9-14	24 19	26 23	7-11	22 15	8-11
26 23	15-24	10-14	17 13	7-11	26 23
5- 9	28 19	24 19	9-14	26 22	11-16
B 186 17 13	8-12	15-24	30 26	11-18	22 18
8-12	w 188 } 27 23	28 3	11-16	22 15	14-17
22 17	w 189 } 11-16		26 23	2- 7	18 14
11-16			B 190 } 16-20	31 26	17-22
24 19			B 191 } 22 17	5- 9	14 7
15-24				26 23	22-26
28 19	6-15		31 26	D 192 9-14	7 2
W 187 14-18	23 18		11-16	25 22	26-31
23 7	19-24		26 22	14-18	19 15
16-32	18 11		5- 9	23 14	31-24
25 22	24-27		23 18	10-26	23 18
			16-23	30 23	
			18 11	7-11	
			12-16	32 27	
				11-18	
				23 14	
				8-11	
				21 17	
				11-15	
Drawn.	Drawn.	W. wins.	B. wins.	Drawn.	Drawn.
Drummond.	Drummond.	Drummond.	Drummond.	R. Frazer.	J. P. Reed.
7	7	7	8	8	8

66	67	68	69	70	71
24 20	29 25	30 26	30 26	31 26	31 27
15-24	16-20	14-18	4- 8	4- 8	15-18
28 19	22 17	23 7	20 16	20 16	22 15
9-13	11-16	16-30	12-19	12-19	14-26
27 24	25 22	31 26	23 16	23 16	30 23
5- 9	8-11	30-23	8-11	8-11	14-17
30 25	31 26	27 18	16 7	16 7	21 14
1- 5	5- 9	11-16	2-11	2-11	6- 9
32 28	23 18	18 11	B 193 22 17	26 23	13 6
9-14	14-23	8-15	D 194 15-19	11-16	1-17
22 18	27 18	7 3	29 25	30 26	B 198 23 18
13-22	16-23	16-20	11-16	15-18	17-22
18 9	26 19	32 27	B 195 } 32 27	22 15	18 15
6-13	20-27	4- 8	B 196 }	10-19	5- 9
25 18	32 23	29 25	16-20	B 197 29 25	15 10
10-14	15-24	15-19	25 22	19-24	9-14
18 9	28 19	24 15	19-24	25 22	27 23
5-14		6- 9	26 23	24-27	14-17
29 25			24-28	22 18	23 18
14-18			23 19	14-17	17-21
23 14			5- 9		18 14
16-23			19 16		22-26
24 19			28-32		14 9
23-27			27 23		26-31
31 24			32-27		10 6
11-16			31 24		31-26
30 11			20-27		6 1
7-23			16 11		21-25
14 9			27-31		29 22
23-27			11 7		26-17
9 5			31-26		1 5
27-32			23 19		17-14
5 1			26-30		32 27
32-27			7 2		4- 8
24 30			30-25		27 23
27-23			19 16		8-11
25 22			25-18		23 19
4- 8			2 7		14-10
1 5					5 1
8-11					10- 7
5 9					
11-15					
9 14					
15-19					
22 18					
2- 6					
30 16					
13-17					
18 15					
17-22					
21 17					
22-25					
17 13					
25-30					
14 17					
23-18					
16 11					
19-24					
28 19					
18 22					
17 26					
30- 7					
B. wins.	B. wins.	B. wins.	Drawn.	B. wins.	B. wins.
Killen v. Kehee.	Drummond.	Drummond.	R. Frazer.	Drummond.	J. Lees, Jr.
9	10	10	10	10	10

72	73	74	75	76	77
30 25	8-11	31 26	31 26	29 25	24 20
4- 8	B 201 31 27	8-11	9-13	9-14	15-19
25 9	W 202 11-16	28 24	26 19	18 9	B 203 29 25
5-14	20 11	12-16	6- 9	5-14	9-14
29 25	15-18		27 23	27 9	18 9
8-11	22 15		9-14	6-13	6-13
25 22	10-26		18 9	24 19	27 18
11-15	17 10		5-14	15-24	11-15
B 199 } 31 26	6-15		30 25	28 19	18 11
B 200 } 15-19			1- 5	11-15	8-15
23 16			24 20	B A 32 27	
12-19			15-24	15-24	
20 16			28 19	27 20	
10-15			5- 9	12-16	
22 17			32 28	20 11	
14-18			11-15	8-15	
				A	
				32 28	
				15-24	
				28 19	
				2- 6	
B. wins.	Drawn.	B. wins.	B. wins.	B. wins.	B. wins.
Drummond.	Stephen Terry.	Drummond.	J. Lees, Jr.	Drummond.	Drummond.
10	10	10	11	11	11

78	79	80	81	82	83
24 20	29 25	31 26	22 17	23 18	20 16
15-19	6-10	6-10	7-10	15-19	9-13
B 204 27 24	13 6	26 19	27 24	B 205 } 18 15	16 11
2- 7	2- 9	14-23	11-15	B 206 } 9-13	5- 9
24 15	24 19	13 6	18 11	15 11	32 27
7-10	15-24	2- 9	8-15	5- 9	10-15
31 27	28 19	27 18	B A 31 27	30 26	27 23
10-19	11-15	11-16	15-18	10-15	19-24
27 24	18 11	18 11	29 25	32 27	B A 23 18
11-15	8-24	8-15	4- 8	6-10	1- 5
18 11	27 20		24 20	27 23	B B 17 14
8-15	4- 8		8-11	9-14	24-27
22 17	31 26		27 24	23 16	31 24
14-18	23-27		23-27	12-19	13-17
17 14	32 23			20 16	22 13
18-22	8-11			19-23	15-31
14 10	22 18			26 19	
9-14	9-13		A	15-24	
10 7	14 9			16 12	
15-18	5-14		29 25	1- 6	A
24 15	25 22		4- 8	12 8	
23-26	1- 5		25 22	14-18	23 19
30 23	22 18		8-11	22 15	24-27
18-27	5- 9		31 26	13-22	
32 23	26 22		11-16		
6- 9	12-16		24 20		
			15-24		B
			20 11		
			14-18		26 23
			22 15		24-28
			10-19		31 27
			11 7		6-10
			24-27		27 24
					28-32
B. wins.	B. wins.	B. wins.	B. wins.	B. wins.	B. wins.
J. P. Reed.	J Macfarlane.	Drummond.	J. Roll.	Drummond.	Drummond.
11	11	11	11	12	12

84	85	86	87	88	89
22 18	22 17	32 27	22 15	6- 9	24 20
10-14	9-14	15-22	11-18	29 25	A } 16-19
17 10	29 25	26 17	23 7	9-18	B } 14 10
6-22	5- 9	9-14	16-30	3 8	B } 2- 7
26 17	31 27	17 10	7 3	4-11	32 27
9-13	11-15	A } 6-15	9-13	24 19	7-14
17 14	25 22	B } 31 26	17 14	15-24	3 7
1- 6	14-18	B } 15-18	8-11	22 8	6-10
B A 31-26	17 14	B 207 } 29 25	B A 24 20	5- 9	27 24
4- 8	10-17	B 208 }	4- 8	28 19	14-17
32 28	21 5	5- 9	29 25	9-14	7 14
8-11	18-25	13 6	13-17	8 4	17-26
29 25	27 23	1-10		1- 6	
2- 7	19-24	21 17		4 8	
	23 19	10-15		2- 7	
	25-29		A	32 27	A
	19 10			14-18	
A	6-15		24 19	19 15	32 27
	26 22	A	30-26	7-11	6- 9
29 25	15-19		31 22	8 3	
19-23	22 18	21 17	2- 7	11-16	
32 28	29-25	19-23		3 7	
2- 7	18 15	27 18		16-19	B
B B 25 22	25-22	15-22		7 11	
23-26	15 10	17 14		19-23	20 16
22 18	22-18	1- 6		27 24	6- 9
6-10	13 9			23-26	14 10
	18-14			11 7	2- 7
	10 7			6- 9	
	14-17	B		15 10	
		27 23		26-31	
		19-26		7 11	
		31 22		18-23	
		1- 6		11 15	
		22 17		9-14	
		5- 9		24 20	
				23-26	
				10 6	
				26-30	
				6 1	
				31-26	
				1 6	
				14-17	
B. wins.	B. wins.	B. wins.	B. wins.	Drawn.	B. wins.
Drummond.	W. Campbell v. D. G. McKelvie.	Drummond.	Drummond.	Summers v. Williams	Drummond.
12	12	12	13	13	13

90	91	92	93	94	95
29 25	29 25	17 13	31 27	17 13	17 13
20-27	7-14	D 209 16-20	15-18	D 220 2- 7	11-16
32 23	3 7	31 26	22 15	22 17	22 17
2- 7	15-19	11-16	10-26	7-11	5- 9
28 24	24 15	B 210 21 17	D 218 17 10	B 221 25 22	31 27
7-14	14-17	14-21	6-15	4- 8	16-19
3 7	21 14	23 18	30 23	31 27	B 222 } 27 23
14-18	6-10	16-23	15-19	15-18	B 223 } 15-18
23 14	15 6	18 11	23 16	22 15	23 16
15-19	1-26	8-15	12-19	11-18	18-22
24 15		27 11	20 16	13 9	25 18
6-10		20-27	5- 9	6-22	14-30
		32 23	21 17	21 17	16 11
		D 211 12-16	4- 8	14-21	30-26
		B 212 } 22 17	B 219 25 22	23 7	B 224 32 27
		B 213 } 16-20	8-11	22-25	26-31
		B 214 25 22		7 3	27 24
		D 215 10-15		25-29	31-27
		B 216 23 18		20 16	24 20
		D 217 21-25		12-19	27-24
		30 21		3 12	11 8
		2- 7			24-19
		11 2			8 4
		15-19			19-15
		2 9			20 16
		5-30			15-19
		22 18			16-11
		30-26			19-16
		18 15			11 7
		26-22			16-11
		15 10			7 3
		19-23			11- 7
		10 7			4 8
		23-26			
		7 2			
		26-31			
		17 14			
		31-26			
		14 10			
		22-18			
B. wins.	B. wins.	Drawn.	Drawn.	Drawn.	Drawn.
Drummond.	Drummond.	Drummond.	Drummond.	J. Macfarlane.	R. Walker.
13	13	14	14	14	14

96	97	98	99	100	101
32 27	26 23	26 23	26 23	14 10	22 17
1- 5	9-13	15-18	15-18	7-14	15-18
26 22	23 19	22 15	22 15	22 17	23 19
19-26	15-18	10-26	23 19	24-27	11-15
22 17	22 15	30 23	23 19	17 1	30 26
14-18	13-22	11-15	11-15	27-31	5- 9
	D 226	19 16	29 25	13 6	
		8-11	4- 8	31-24	
	B 227	23 19	30 26		
	D 228	4- 8	5- 9		
		19 10			
		6-15		A	
				19 15	
				24-27	
				15 8	
				4-11	
				22 17	
				6-10	
				13 6	
				27-31	
				18 9	
				31-13	
B. wins.	Drawn.	B. wins.	B. wins.	B. wins.	B. wins.
Drummond.	J. McFarlane.	Drummond.	Drummond.	Anderson.	Drummond.
14	15	15	15	17	18

102	103	104	105	106	107
23 18	28 24	28 24	16 11	23 18	5- 9
14-23	8-12	23-26	14-17	14-23	19 15
27 18	16 11	30 23	21 14	27 18	10-19
20-27	23-27	18-27	30-21	20-27	24 15
32 23	11 7	3 7		32 23	12-16
12-16	27-31	27-31		6- 9	26 23
30 26	7 3	24 20		B 233 17 13	8-12
D 232 5- 9	31-27	31-26		10-14	15 11
21 17	24 20	20 16		13 6	6-10
16-20	27-23	26-30		1-10	13 6
25 21	3 7	7 11		18 9	10-15
20-24	14-18	30-26		5-14	11 7
28 19	7 11	16 12		B A 28 24	1-10
15-24	23-19	14-17		12-16	7 2
17 14	21 17	21 14		24 20	
10-17	19-15	6- 9		4- 8	
21 5	11 7	13 6		30 26	
24-27	18-23	1-17		8-12	
18 14	25 22	25 21			
27-31	23-26	17-22			
14 9	30 23				
31-27	15-11			A	
9 2	7 16				
27-25	12-26			22 17	
26 23	20 16			15-18	
25-22	26-30			23 19	
23 19	16 11			18-23	
8-12	30-25			25 22	
	22 18			23-27	
	25-21			17 13	
	18 14			27-31	
	5- 9			13 9	
	14 5			31-27	
	21-14			9 6	
	11 7			27-24	
	6-10				
	7 2				
	10-15				
	2 7				
	15-18				
	13 9				
	18-23				
	7 11				
	23-27				
	11 7				
	27-31				
Drawn.	B. wins.	Drawn.	B. wins.	B. wins.	W. wins.
Drummond.	J. P. Reed.	Fitzpatrick v. R. E. Bowen.	Drummond.	Drummond.	J. P. Reed.
18	18	18	18	19	19

108	109	110	111	112	113
26 22	13 9	7 11	6 9	22 17	7 3
8-11	8-11	15-18	22-17	W 237 15-19	15-18
D 234 24 19	B 236 26 23	B A 27 23	9 6	7 2	22 15
15-31	12-16	18-27	17-14	D 238 10-15	10-19
22 8	9 6	32 23	6 1	D 239 25 22	3 7
31-26	1-10	20-27	14-10	27-32	4- 8
8 3	21 17	11 20	1 5	2 7	7 3
26-23	14-30	23-19	10-15	32-27	8-12
B 235 25 22	23 7	20 24	5 9	7 11	3 7
14-18	30-26	19-23	18-22	27-32	12-16
22 15	7 3	24 31	9 14	11 18	7 11
5- 9	26-23	12-16	22-26	19-23	16-20
13 6	27 18	28 24	14 9	18 27	11 16
1-19	20-27	16-20	26-30	32-23	19-23
21 17	32 23		9 14	28 24	25 22
	15-22		30-26	4- 8	27-31
			14 9	30 25	16 19
		A	15-10	8-12	23-27
			9 5	24 20	19 23
		11 15	26-22	23-26	27-32
		18-23	5 9	22 18	30 25
		27 18	22-18	26-22	31-27
		20-27	9 5	17 14	22 18
		32 23	18-15	22-15	6-10
		26-10	5 9	14 5	13 6
			16-19	15-18	10-14
			9 5	21 17	18 9
			10-14	18-15	27-18
			5 1	B 240 } 17 14	6 2
			14-18	B 241 } 6- 9	18-14
			1 6	13 6	9 5
			19-23	1-17	14-18
			6 1		2 7
			23-26		18-15
			1 6		21 17
			26-30		32-27
			6 1		17 13
			30-26		27-23
			1 6		13 9
			26-22		15-18
			6 1		25 21
			22-17		18-14
			1 6		7 3
			17-14		23-19
			6 1		3 7
			12-16		19-15
					9 6
					1-10
					21 17
Drawn.	B. wins.	B. wins.	B. wins.	Drawn.	Drawn.
Drummond.	Drummond.	Drummond.	R. Frazer.	Anderson.	J. P. Reed.
19	19	19	19	20	20

114	115	116	117	118	119
15-19	26-19	7 3	23 19	28 24	23 19
2 7	24 15	8-12	8-12	6-10 D 243	8-12
10 15	30-26	3 7	32 23	24 20	32 23
7 11	15 10	6- 9	6- 9	8-12 D 244	4- 8
19-23	26-23	7 2	19 15	23 19 D 245	2 7
11 18	10 7	12-16	31-27	31-26 D 246	31-26
27-32	25-30	2 6	23 19	32 23 D 247	23 18
18 27	7 3	31-26	27-24	4- 8	14-23
32-23 w 242	16-19	6 13	19 16	23 18	7 14
28 24	3 7	26-19	12-19	14-23	26-22
4- 8	23-26		15 11	7 14	14 10
21 17	7 10		4- 8	26-22	22-18
23-27	19-23		11 4	14 10	10 7
24 20	2 7		24-27	22-18	23-27
8-12	23-27		4 8	10 7	28 24
22 18	32 23		27-23	18-14	27-31
27-23	26-19		8 11	7 3	24 20
18 15	11 16		23-18	23-27	31-27
23-19	19-23		7 2	19 16	7 3
15 11	16 11		9-13	12-19	27-24
9-14	30 26		2 7	3 12	19 16
17 10	10 14		19-23	27-31	12-19
6-15	26-22		28 24	20 16	3 12
11 7	14 10		23-27	19-23	18-14
15-18			24 19	16 11	12 8
25 22			27-31	23-27	19-23
18-25			19 16	12 16	20 16
30 21			31-26	27-32	24-19
19-15			16 12	11 7 B 248	16 11
7 3			26-23	32-27	19-15
			11 16	7 2	11 7
			14-17	31-26	23-26
			21 14	2 7	7 3
			18- 9	26-23	26-31
				7 11	3 7
					31-26
					7 11
					15-19
					8 12
W. wins.	Drawn.	B. wins.	Drawn.	Drawn.	Drawn.
F. Wolf v J. Brown.	J. P. Reed.	Williams v. Summers.	C. F. Barker v J. P. Reed.	I. J. Brown v. F. J. Feidler.	J. P. Reed.
20	21	22	22	22	22

120	121	122	123	124	125
7 11	14-18	16-19	4- 8	8-11	6-10
1- 6	23 14	23 16	32 23	27 23	23 18
11 7	31-26	31-26	26-19	11-16 w 252	1- 6
6-10	32 23	32 23	17 14	24 20	27 23
7 11	26-19	26-12	1- 6	15-24 w 253	16-20
D A 4- 8	21 17	17 14	14 17	20 11	32 27
11 4	19-16	12- 8	D A 16-20	7-16	8-11
12-16	10 15	14 10	18 14	28 19	18 14
28 24 w 250	4- 8	8-11	D B 20-24	4- 8	9-18
10-15	14 10	21 17	17 13	29 25	23 7
B 249 32 28	16-11	4- 8	24-27	8-11 w 254	6-10
16-20	15 18	17 14	21 17	25 22	21 17
23 19	12-16	1- 5	27-31	5- 9	4- 8
15-18	28 24	14 9	14 9	30 26	24 19
19 16 w 251	8-12	5-14	6-10	16-20 w A	11-16
31-26	18 23	10 17	17 14	19 16	27 23
24 19	16-20	11-15	10-17	12-19	2-11
26-23	23 27	17 14	13 22	23 7	3 7
4 8	12-16	8-11		2-11	
27-31	27 32	28 24		32 27	
8 12	20-27	11-16		11-15	
31-27	32 23	24 20	A	26 23	A
19 15	11-15	16-19		15-18	
23-19	10 7	14 9	6- 9		11-15
15 10	15-10		28 24		19 16
19-15	7 2		19-28		12-19
10 6	1- 5		17 13		3 12
	17 13		28-24		2-11
	16-20		13 6		12 16
	23 19		24-19		
A	5- 9		6 10		
			8-11		
31-26					
11 15			B		
10-19					
23 16			19-23		
12-19			17 22		
32 16			23-19		
26-23			22 17		
16 11			20-24		
23-19			17 13		
11 7			24-27		
19-15			21 17		
7 3			27-31		
Drawn.	Drawn.	Drawn.	Drawn.	W. wins.	W. wins.
R. Lyons	J. P. Reed.	C. F. Baker v. H Z. Wright.	Heffner v. Barker.	J. McKenzie v. F W Drinkwater	Anderson.
23	23	23	23	1-24	1-25

126	127 ✓	128 ✓	129	130	131 ✓
9-14	14-18	9-14	8-15	18-23	14-18
19 15	20 16	18 9	22 17	25 22	23 14
16-19	18-25	5-14	16-23	6- 9	9-18
23 16	30 7	22 17	27 11	13 6	17 14
12-19	2-27	w 255 } 6- 9	12-16	2- 9	16-23
15 10	19 1	w 256 } 13 6	25 22	28 24	14 9
1- 5			10-15	9-14	5-14
10 6		B 257 } 25 22	24 20	22 18	22 17
5- 9		w 258 } 16-19			23-26
6 1		w 259 } 14-18	20 16		30 23
19-23		w 260 } 6-10			12-16
27 18			13 6		23 19
14-23		17 13	18-25		16-23
1 6		18-25	2- 9		25 22
9-13		13 6	16 12		18-25
6 10		15-18	9-14		27 2
23-26		6 2	17 13		25-30
10 14		10-14	19 24		24 20
26-30		2 7	28 19		8-12
14 18		11-16	15-24		17 14
30-25		D 261 } 7 10	22 17		10-17
32 27			14-18		21 14
8-11					15-18
27 24		D 262 } 25-29			2 6
11-16			17 22		
31 27		18-25	27 18		
16-20		27 18	12-16		
24 19		w 263 } 18 14	18 14		
4- 8			8-11		
19 16			14 10		
8-12			4- 8		
16 11			24 20		
12-16			16-19		
27 23			10 7		
			19-23		
			7 3		
			8-12		
			3 8		
			11-15		
			8 11		
			15-18		
			11 15		
			18-22		
			20 16		
			12-19		
			15 24		
			23-26		
			30 23		
			25-30		
W. wins.	W. wins.	Drawn.	W. wins.	W. wins.	W. wins.
A. S. McKay.	R. Freer.	Chas. Hefter.	Geo. Dick.	Geo. Dick.	McInnes v. McKendrick.
1-25	1-26	1-27	1-27	1-27	1-28

132	133	134	135	136	137
29 25	20-24	31 26	24 19	22 17	30 25
11-16	22 17	9-14	15-24	7-11	22-26
26 23	14-18	26 22	28 19	26 23	31 22
15-19	16 11	6- 9	D 264 4- 8	w 265 11-16	5- 9
24 15	15-19	13 6	26 23	24 20	22 18
10-26	29 25	2- 9	8-11	8-11	11-15
30 23	10-15	22 18	30 26	25 22	18 11
14-18	11 7	15-22	11-16	w 266 15-19	8-15
23 14	24-27	25 18	32 28	30 26	25 22
6- 9	31 24	9-13	7-11	10-14	4- 8
13 6	19-28	18 9	22 18	17 10	29 25
1-26	7 2	5-14	10-15	6-15	8-11
31 22		30 25	19 10	13 6	
16-19		1- 5	6-22	1-10	
22 17		25 22	13 6	D 267 22 18	
8-12		5- 9	2- 9	15-22	
17 14		22 18	26 17	26 17	
4- 8		11-15	11-15	19-26	
21 17		18 11	29 25	31 22	
8-11		8-15	16-19	16-19	
25 21		29 25	23 16	32 27	
11-16		13-17	12-19	11-15	
		24 20	25 22	27 24	
		15-31	19-23	19-23	
		20 11	17 13	17 13	
		17-22	9-14	23-26	
		25 18	22 17	22 18	
		10-15	14-18	15-22	
			13 9	20 16	
			5-14	12-19	
			17 10	24 6	
			23-26	2- 9	
			31 22	13 6	
			18-25		
B. wins.	W. wins.	B. wins.	Drawn.	Drawn.	B. wins.
Cleveland Sun.	E. T. Baker.	J. P. Reed.	W. Strickland v. A. Jones.	J. P. Reed.	Drummond.
2-32	2-32	2-34	2-35	2-35	2-36

138	139	140	141	142	143
16 11	21 17	25 22	13 9	27 20	22 18
22-25	18-22	18-25	14-18	15-19	9-13
29 22	25 18	29 22	23 14	23 16	18 9
14-18	15-22	5- 9	10-17	12-19	5-14
17 14	17 13	B 268 22 17	25 22	20 16	30 25
10-17	10-14	9-14	5-14	10-15	13-22
21 14	30 25	27 23	22 13	32 27	25 9
18-25	22-26	11-16	2- 6	6-10	1- 5
14 10	31 22	23 18	24 20	30 26	9 6
25-30	14-17	16-23	7-10	1- 6	2- 9
26 23	22 18	18 9	27 24	27 24	23 18
15-18	17-21	15-18		9-14	9-14
23 14	25 22	9 5		16 11	18 9
6-15	21-25	8-11		7-16	5-14
14 10	22 17	24 20		24 20	
30-25	25-30	10-15		14-18	
10 7	27 23	31 27		20 11	
15-18	11-16	12-16		18-23	
24 20	32 27	17 13		26 22	
18-22	1- 6			19-24	
7 3	18 15			28 19	
22-26	8-11			15-24	
31 22	15 8			22 18	
25-18	4-11			10-15	
27 24	24 20			17 14	
1- 6	7-10			15-22	
20 16	28 24			25 18	
12-19	5- 9			23-27	
24 15	17 14			18 15	
18-14	9-18			6- 9	
28 24	23 7			14 10	
14-10	16-32			9-13	
24 19	7 3			29 25	
5- 9	11-15			27-32	
3 8	3 8			25 22	
2- 7	32-28			32-27	
11 2	8 11			31 26	
4-18				24-28	
19 16				22 18	
10-15				27-31	
2 7				26 22	
15-11				31-27	
7 10				11 8	
16-20				4-11	
				15 8	
				27-23	
				18 14	
				23-19	
				22 18	
				19-16	
				8 3	
				16-12	
				18 15	
				12-16	
B. wins.	B. wins.	B. wins.	B. wins.	B. wins.	B. wins.
J. T. Denvir.	E. La Rue.	E. La Rue	E. La Rue.	Drummond.	R. Frazer.
2-36	3-38	3-38	3-39	4-42	4-42

144	145	146	147	148	149
30 25	31 26	22 17	30 26	32 27	27 24
15-19	6- 9	4- 8	4- 8	6- 9	16-19
24 15 ^B	A 24 20	25 21	31 27	31 26	24 20
6-10	9-18	6-10	8-12	9-18	19-23
15 6	26 23	31 26	22 17	26 23	20 16
1-26	19-26	1- 6	6- 9	19-26	8-12
31 22	30 14 ^B	270 26 22		30 14	16 11
16-19	1- 6	8-12		1- 6	23-26
32 27	32-27	32 27			11 8
7-11	6- 9	12-16			26-30
^B 269 27 24	20 16	24 20			25 21
19-23	9-18	6- 9			30-26
24 19	16 12				15 11
23-26	5- 9				26-22
19 15	28 24				8 4
11-18	9-13				14-18
22 15	24 20				4 8
26-30	2- 6				18-23
25 21	20 16				11 7
30-26	6- 9				2-11
29 25	27 24				8 15
26-23	18-23				23-26
15 10	24 20				^B 271 15 11
23-18	9-14				26-30
	25 21				10 7
	14-18				30-26
	16 11				7 2
	7-16				26-23
	20 11				2 7
	18-25				1- 5
					7 10
					23-18
					10 7
	A				18-14
					7 3
	32 27				22-18
	9-18				
	26 23				
	19-26				
	30 14				
	1- 6				
B. wins.	B. wins.	B. wins.	B. wins.	B. wins.	B. wins.
Drummond.	Drummond.	Drummond.	Drummond.	Drummond.	Drummond.
4-43	4-43	4-43	4-43	4-43	4-46

150	151	152	153	154	155
32 27	32 28	8-11	16 11	27 23	17 13
9-14	5- 9	26 23	23-26	19-26	9-14
27 23	10 6	14-17	B A 10 7	30 23	22 17
16-19	1-10	23 14	26-30	4- 8	4- 8
23 16	15 6	6- 9	7 3	28 24	29 25
12-19	9-13	13 6	2- 6	9-13	8-12
25 22	6 1	2-18	3 7	23 18	31 27
19-24	2- 7	21 14	14-17	8-11	12-16
29 25	1 6	10-17	21 14	31 26	24 20
24-28	8-12	25 21	30-21	6-10	14-18
31 27	B 272 6 2	17-22	11 8	24 20	20 11
28-32	7-11	21 17	6-10	1- 6	18-23
27 24	2 7	5- 9		20 16	27 18
32-27	11-16	24 20		11-20	15-29
24 20	27 24	9-13		18 11	11 8
27-31	20-27	17 14	A	20-24	29-25
25 21	7 11	1- 5		11 8	8 4
31-26	16-20	19 15	11 8	24-27	25-22
22 17	11 16	13-17	26-30	8 4	
26-22	19-23	15 8	8 4	27-31	
20 16	16 19	4-11	14-17	26 23	
22-13	23-26	28 24	21 14	31-27	
16 12	19 23	11-15	30-21	23 19	
8-11		30 26		27-23	
15 8		22-25		19 16	
13- 9		26 23		23-19	
				16 11	
				10-15	
				4 8	
				15-18	
B. wins.	Drawn.	W. wins.	B. wins.	B. wins.	B. wins.
Drummond.	J. P. Reed.	Swan and Adamson.	J. Macfarlane.	Drummond.	Drummond.
4-47	4-48	5-50	6-51	6-52	6-52

156	157	158	159	160	161
6 10	17 13	29 25	32 27	9-13	9-14
31-26	9-14	9-14	15-18	17 14	22 18
10 17	32 27	D 273 32 27	23 7	10-17	11-15
13-22	14-18	14-18	16-32	21 14	18 11
21 17	23 7	23 7	24 20	13-17	8-24
26-23	16-32	16-32	11-16	22 13	20 11
17 13	24 20	31 27	20 11	6- 9	24-28
23-19	32-27	32-23	8-15	13 6	29 25
13 9	31 24	26 10	7 3	w A 2-27	w A 5- 9
19-15	15-19	6-15	15-19	32 23	25 22
	24 15	7 3	17 13	1- 6	9-13
	11-25	11-16	12-16	31 27	11 7
	29 22	17 14	3 7	6-10	2-11
	2-11	16-20	2-11	27 24	22 18
	26 23	24 19	22 18	10-14	
	11-16	15-24	16-20	29 25	
	20 11	28 19	21 17	5- 9	
	8-15	20-24	4- 8	26 22	A
	23 18	19 16	29 25	9-13	
	15-19	12-19	11-16	22 18	6- 9
	18 15	3 12	17 14	14-17	23 19
	4- 8	1- 6	8-12	18 14	9-13
	30 26	14 9	25 22		25 22
	12-16	5-14	19-23		5- 9
	22 18	12 16	26 19		26 23
	8-12	19-23	16-23	A	1- 6
	26 22	16 19	31 27		30 26
	19-23	24-27	23-26	1-17	
	15 10	19 26	30 23	29 25	
	6-15	27-31	12-16	2- 6	
	18 11	26 23	14 10	25 22	
	5- 9	6- 9	6-15	17-21	
	13 6	23 19	18 11	32 28	
	1-10	9-13	9-14	6-10	
	11 8	19 15	22 18	28 24	
	10-15	2- 6	14-17	5- 9	
	8 3		13 9	22 18	
	15-19		5-14	10-14	
	3 8		18 9	26 22	
	16-20		17-22		
	8 11		11 7		
	23-26		22-26		
	22 17		7 3		
	26-31		26-30		
			3 7		
			30-26		
			23 19		
			16-23		
			27 18		
B. wins.	Drawn.	Drawn.	Drawn.	W. wins.	W. wins.
Stephen Terry.	Stroud v. Sullivan.	E. H. Bryant v. P. J. Hickey.	B. Woolhouse.	Drummond.	Drummond.
6-54	7-55	7-55	7-55	7-55	7-55

162	163	164	165	166	167
11-15	32 28	2- 7	9-14	24-28	29 25
20 11	16-19	18 15	18 9	31 27	9-14
15-24	23 7	11-27	5-14	1 6	18 9
23 18	2-11	20 2	w 276	29 25	5-14
8-15	28 19	w 274 1- 6	D 277	26 22	25 22
18 11	11-16	32 23	w 278	2- 6	11-15
10-15	20 11	w 275 24-28	w 279	32 28	20 11
17 13	8-24	29 25	w 280	14-18	6-10
24-28	21 17	28-32		B 282 27 24	6-10
21 17	12-16	25 22		22 15	32 28
12-16	29 25	8-11		1-27	15-19
29 25	16-20	2 7		20 11	23 16
16-19	17 14	11-16		8-15	w 283 12-19
31 27	9-18	7 11		28 10	D 284 11 7
	22 15	16-20		6-15	2-11
	24-27			31 24	22 17
	31 24			12-16	8-12
	20-27			D A 10-15	17 13
	15 11			17 10	11-16
	27-32			15-19	13 9
	26 22			24 15	14-18
				11-27	9 6
				20 11	10-15
				8-15	6 2
				32 23	18-23
				28-32	2 7
					24-27
					31 24
					16-20
				A	7 11
					20-27
				11-15	11 18
				20 11	27-31
				12-16	18 27
				11 7	31-22
				16-20	21 17
				7 3	22-13
				20-27	30 26
				3 12	
				27-31	
				23 19	
				15-24	
				32 27	
				28-32	
W. wins.	Drawn.	Drawn.	Drawn.	Drawn.	Drawn.
Swan and Adamson.	J. Lees, Jr. v. H. Black.	R. Walker.	R. Walker.	J. Lees, Jr.	J. K. L. Sinster.
7-55	7-55	7-55	7-55	7-55	7-55

168	169	170	171	172	173
2- 7	24-28	9-14	17 14	6- 9	30 26
17 14	13 6	D 285 16 12	10-17	16 12	9-14
16-19	2- 9	w 286 } 5- 9	21 14	w A 9-14	16 12
23 16	29 25	D 287 }	6-10	12 8	1- 5
12-19	10-15	17 13	B 289 29 25	11-16	12 8
32 28	25 21	1- 5	10-17	8 3	14-18
9-13	15-22	22 17	25 21		23 14
29 25	26 17	11-16	4- 8		15-19
7-10	9-13	29 25	21 14		24 15
14 7	17 14	w 288 16-19	15-19	A	11-25
11-16	w A 11-15	27 23	24 15		29 22
20 11	20 11	20-27	11-25	11-16	4-11
8-29	15-18	31 24	30 21	24 19	
7 3	11 7	14-18	8-12	15-24	
6- 9	18-27	23 16	27 23	28 19	
3 7	31 24	15-19	12-19		
4- 8		24 15	23 16		
7 3		10-19	1- 6		
8-12		26 22	31 27		
3 7	A	18-23	6- 9		
29-25		22 18	26 23		
30 21	13-17	23-27	9-18		
13-17	30 26	18 15	23 14		
21 14		7-11	13-17		
9-18		16 7	16 12		
7 11		2-18	17-22		
5- 9		17 14	12 8		
31 27		27-31	7-11		
24-31		14 10	8 4		
11 16		6-15	22-26		
31-22		13 6	14 10		
16 5		19-23	26-31		
		6 2	4 8		
		5- 9	31-24		
		2 7	28 19		
		9-13	11-15		
		7 11	19 16		
		31-27	15-19		
			8 11		
Drawn.	W. wins.	Drawn.	Drawn.	W. wins.	B. wins.
Drummond.	Drummond.	Swan and Adamson.	S. Burns.	Drummond.	J. P. Reed.
7-55	7-55	7-57	7-57	7-57	7-57

174	175	176	177	178	179
9-14	30 26	15-18	25 22	19 15	30 25
18 9	9-14	22 8	4- 8	11-18	D 297 6-10
1- 5	18 9	4-11	3 12	23 7	25 18
31 26	5-14	30 25	14-18	2-11	9-14
5-14	D 291 26 23	17-22	23 14	30 25	18 9
26 23	6- 9	25 9	10-26	9-13	5-14
w 290 6- 9	D 292 16 12	6-13	24 19	25 18	D 298 } 29 25
	w 293 11-16		31-15	13-22	D 299 }
Same as	12 8		16 11	26 17	D 300 11-16
Var. 57	4-11		7-16	11-15	25 22
at	24 19		12 1	18 11	8-11
15th move.	15-24		26-31	8-15	26 23
	28 12		1 6	17 14	4- 8
	11-15		31-26	15-18	22 18
	12 8		6 9	29 25	1- 5
	7-11		26-23	4- 8	18 9
	8 3		9 14	24 19	5-14
	w 294 11-16		20-24	6- 9	17 13
	22 18		28 19	14 10	10-15
	w 295 15-22		23-16	9-14	13 9
	3 8		14 18	10 6	15-19
	10-15		16-19	1-10	9 6
	17 10		21 17	19 16	19-26
	w 296 9-14			12-19	31 22
				27 23	16-19
				19-26	
				31 6	
				14-18	
				6 2	
				8-11	
				2 7	
				11-16	
				7 10	
				18-23	
				10 14	
				23-27	
				14 18	
				16-19	
				21 17	
				27-32	
				18 22	
				32-27	
				17 14	
				27-23	
Drawn.	Drawn.	W. wins.	Drawn.	Drawn.	Drawn.
J. Wyllie.	T. Finn.	Drummond.	Wyllie:	J. Deans v. R. Martins.	W. Taylor.
7-57	7-57	7-57	7-57	7-58	7-58

180	181	182	183	184	185
8-12	9-13	17 13	24 19	30 26	22 18
23 18	23 19	D 301 15-18	15-24	8-12	15-22
4- 8	w A 15-18	22 15	28 19	D 304 24 19	25 18
30 26	22 15	10-26	w 302 11-15	15-24	11-15
12-16	13-22	30 23	22 18	28 19	18 11
29 25	30 26	11-16	15-22	11-15	8-15
9-13	11-18	29 25	19 16	19 16	21 17
18 14	26 17	8-12	w 303 10-15	12-19	4- 8
15-19	10-15	31 26	17 10	23 16	29 25
14 7	19 10	4- 8	8-12	15-19	8-11
6- 9	6-15	25 22	16 11	16 11	25 22
24 15	17 14	16-19	15-19	19-24	1- 6
11-18	8-11	24 15	23 16	D 305 26 23	17 13
22 15	31 26	6- 9	6-15	24-28	9-14
13-29	1- 6	13 6	11 7	11 7	
7 3	14 10	1-19	12-19	4- 8	
8-12	6- 9	23 16	7 3	7 2	
3 7	10 7	12-19	15-18	5- 9	
29-25	9-13	22 17	27 23	2 7	
7 10	26 23	14-18	18-27	28-32	
9-13	18-22	17 14	31 15	22 18	
15 11	7 3	8-12	20-24	8-12	
5- 9		14 10	3 7	17 13	
10 15		5- 9	5- 9	1- 5	
1- 5		10 7	15 10	21 17	
26 22	A	9-13	9-14	14-21	
		7 2	7 11	7 14	
	8-12	18-22	24-27	12-16	
	19 16	26 17	11 15	27 24	
	12-19	13-22	27-32	20-27	
	17 14	2 7	10 7	31 24	
	10-26	22-26	32-27	6-10	
	30 7	7 11		14 7	
		26-31		32-28	
		11 15			
		31-24			
		21 17			
		19-23			
		28 19			
		20-24			
W. wins.	W. wins.	Drawn.	Drawn.	Drawn.	B. wins.
J. Duke.	Swan and Adamson.	J. Deans.	J. Macfarlane.	R. Walker.	Drummond.
7-59	7-59	7-59	7-59	7-59	7-59

186	187	188	189	190	191
23 19	4- 8	20-24	11-15	23 18	31 26
8-12	25 22	22 18	22 18	14-23	8-11
27 23	8-11 w A	5- 9		27 11	19 16
20-27	22 18	19 15		8-15	12-19
31 24	10-15	10-19		22 17	23 7
4- 8	17 10	17 10		20-27	2-11
	w A 15-24	6-22		31 24	26 23
	10 7	23 7		5- 9	4- 8
	6-10			25 22	23 18
	13 6			4- 8	14-23
	10-15			32 27	27 18
	7 3	A		9-14	20-27
	15-22				32 23
	3 8	6- 9			8-12
	1-10	17 13			28 24
	8 6	1- 6			5- 9
		25 22			21 17
		11-16			12-16
		22 17			24 20
	A	24-27			15-19
		31 24			18 15
	15-22	16-20			19-26
	10 7	29 25			15 8
	9-14	20-27			26-30
	19 15	25 22			20 11
	11-18	27-31			30-14
	7 2	19 15			8 3
	22-25	10-19			
	2 9	17 1			
	25-29				
	30 26				
	1- 5				
B. wins.	W. wins.	W. wins.	W. wins.	B. wins.	B. wins.
Drummond.	Drummond.	Drummond.	Drummond.	Drummond.	Drummond.
7-60	7-60	7-61	7-61	8-63	8-63

192	193	194	195	196	197
9-13	26 23	5- 9	25 22	31 27	32 28
30 26	11-16	26 23	16-20	14-18	5- 9
1- 5	31 26	11-16 ^B	A 31 27	27 23	29 25
26 22	15-18	32 27	19-24	18-27	1- 5
10-14	22 15	15-18	27 23	32 23	
22 18	10-19	27 24	24-27	19-24	
5- 9 ^B	A 32 27	18-27	22 18	23 18	
25 22	5- 9	24 20	6- 9	24-27	
D A 7-10	29 25	27-32	13 6	25 22	
32 28	1- 5	20 11	27-31	27-31	
12-16		32-28	18 9	18 14	
19 3		11 7	31-13	10-15	
10-26		28-24 ^B	B 23 19	14 10	
18 15	A	7 2	5-14	15-18	
14-18		24-19	6 2		
3 7	29 25	2 7	14-18		
18-25	19-24	19-16	2 6		
7 10	25 22	29 25	10-14		
	24-27	16-20			
	^B B 22 18	31 27			
	14-17	20-16			
A	21 14	27 24	A		
	6- 9	16-20			
7-11		24 19	32 28		
32 27		20-24	20-24		
11-16		19 16			
27 24	B	10-15			
16-20		17 10			
15 11	22 17	1- 5	B		
20-27	27-31	10 1			
11 4	17 10	24-20	6 2		
27-31	31-22	13 6	13- 6		
4 8	10 7	20- 9	2 9		
	22-26		5-14		
	23 18				
	26-22				
	18 14				
	6- 9				
	13 6				
	1-17				
	21 14				
	22-18				
Drawn.	B. wins.	Drawn.	B. wins.	B. wins.	B. wins.
R. Frazer.	Drummond.	H. D. Lyman.	Drummond.	Drummond.	Drummond.
S-64	10-69	10-69	10-69	10-69	10-70

204	205	206	207	208	209
29 25	17 13	20 16	21 17	26 22	5- 9
2- 7	9-14	19-24	5- 9	18-25	24 20
22 17	18 9	B 306 16 11	13 6	29 22	15-24
7-10	5-14	12-16	1-10	5- 9	28 19
25 22	30 26	B 307 } 31 26	17 13	13 6	11-15
19-24	4- 8	B A }	11-15	1-10	20 11
28 19	32 28	10-14	26 22	21 17	15-24
11-15	8-11	17 10	18-25	11-15	27 20
18 11	31 27	6-15	29 22	17 13	8-15
8-24	10-15	29 25	10-14	10-14	30 26
27 18	27 24	1- 6	13 9	13 9	4- 8
14-23	2- 7	21 17	14-18	14-18	20 16
31 26	22 17	9-13	22 17		12-19
24-27	7 10	25 21	18-22		23 16
26 19	29 25	16-19	9 6		8-11
27 31	1- 5	26 23	15-18		16 7
	25 22	19-26	6 2		2-11
	5- 9	30 23	22-26		26 23
	26 23	24-27	2 7		11-16
	19-26	23 19	26-31		31 26
	24 19	15-24	7 11		15-18
	15-24	32 23	31-24		22 15
	28 19	24-27			10-19
		23 19			25 22
		27-31			1- 5
		19 15			22 17
		31-26			14-18
		11 8			23 14
		4-11			9-18
		15 8			17 14
		6-10			16-20
		8 3			32 27
		26-23			19-24
		18 14			27 23
		10-15			18-27
		3 8			26 22
		23-18			
		A			
		32 28			
		16-20			
		28 19			
		10-14			
B. wins.	B. wins.	B. wins.	B. wins.	B. wins.	Drawn.
J. Roll.	W. Murray v. J. Ray.	Drummond.	Drummond.	Drummond.	Drummond.
11-78	12-82	12-82	12-86	12-86	14-92

210	211	212	213	214	215
23 18	B 308 } 10-15	22 18	23 19	23 19	20-24
14-23	B 309 } 23 19	10-15	16-23	20-24	28 19
27 11	D 310 } 15-24	25 22	26 19	19 16	10-14
16-23		16-20	10-14	24-27	17 10
26 19		23 19	22 17	B 316 28 24	6-24
20-27	D 311 } 6-10	15-24	14-18	27-31	23 19
32 23	B 312 } 26 23	28 19	28 24	B A 25 22	24-27
8-24		20-24	6- 9	10-15	22 17
28 19	D 313 } 14-17		13 6	24 20	27-31
10-15	B 314 } 18 14		2- 9	15-18	26 22
19 10	D 315 } 2- 6		11 7	22 15	31-27
6-15			9-13	31-22	19 16
22 17			17 14		27-24
1- 6			13-17		16 12
25 22			7 2		24-19
15-19			17-22	A	12 8
			14 10		1- 6
			22-29		8 3
				26 22	19-15
				31-26	3 8
				30 23	2- 7
				21-30	11 2
				24 20	4-11
				2- 7	2 9
				11 2	5-14
				30-26	17 10
				2 9	15- 6
				5-21	
B. wins.	Drawn.	B. wins.	B. wins.	B. wins.	Drawn.
Drummond.	Drummond.	Drummond.	Drummond.	Drummond.	Stephen Terry.
14-92	14-92	14-92	14-92	14-92	14-92

216	217	218	219	220	221
23 19	15-19	30 23	16 12	5- 9	32 28
15-24	18 15	6-10	9-13	D 321	15-18
28 19	D 317 20-24	23 19	12 3	D 322	23 19
20-24	D 318 15 10	4- 8	13-29	W 323	4- 8
19 16	6-15	B 319 25 22	3 8	20 16	31 27
24-27	26 23	5- 9	29-25	12-19	11-15
16 12	19-26	D 320 22 18	8 11	23 16	27 24
27-31	28 10	14-23	25-22	8-11	8-11
12 8	26-31	27 18	11 15	16 7	30 26
	10 7	9-13	19-23	2-11	18-23
	31-27	17 14	27 18	D 324 22 17	26 22
	7 3	10-17	2- 7	W 325 15-19	14-18
	27-24	21 14	18 14	31 27	
	3 7	13-17	1- 6	10-15	
	24-19	18 15		17 10	
	7 3	17-22		19-23	
	19-24	20 16		26 19	
	3 7	22-26		15-31	
		16 11		10 7	
		1- 6			
		11 4			
		6-10			
		15 6			
		1-18			
B. wins.	Drawn.	Drawn.	B. wins.	Drawn.	B. wins.
Drummond.	Drummond.	Drummond.	Drummond.	J. Swan.	Drummond.
14-92	14-92	14-93	14-93	14-94	14-94

222	223	224	225	226	227
26 22	32 28	11 7	30 26	21 17	16 12
15-18	15-18	26-23	5- 9	11-18	8-11
22 15	27 24	7 3	23 18	19 15	12 8
19-23	18-23	23-19	11-16	10-19	11-15
27 18	24 15	3 8	18 11	24 15	8 3
10-19	10-19	19-16		D 326 } 8-11	22-25
17 10	17 10	32 28		D 327 } 15 8	29 22
6-29	6-15	16-11		4-11	18-25
13 6	13 6	8 15		27 24	21 17
1-10	1-10	10-19		20-27	25-29
				32 14	17 13
				D 328 11-16	5- 9
				28 24	3 7
				16-20	1- 5
				24 19	7 14
				20-24	9-18
				14 10	30 26
				6-15	18-22
				19 10	26 17
				24-27	6-10
				17 14	
				27-32	
				10 7	
				32-27	
				14 10	
B. wins.	B. wins.	B. wins.	B. wins.	Drawn.	B. wins.
Geo Dick	Drummond.	Drummond.	Drummond.	J. Deans.	Drummond.
14-95	14-95	14-95	15-97	15-97	15-97

228	229	230	231	232	233
24 19	24 19	29 25	13 9	16-20	30 26
10-14	11-15	11-15	6-22	21 17	9-14
16 12	28 24	23 19	21 17	20-24	18 9
8-11	5 9	5- 9	14-21	28 19	5-14
B 329 19 15	29 25	30 26	23 7	15-24	B A 28 24
6- 9	4- 8	4- 8	11-15	18 14	12-16
15 8	32 28	19 16	7 3	10-15	24 20
4-11	8-11	12-19	4- 8	23 19	4- 8
12 8		27 23	27 23	24-28	17 13
D 330 11-15		20-27	20-27	19 10	1- 6
8 3		23 16	23 18	6-15	
22-25		8-12	8-11	14 10	
29 22		32 23	32 23	28-32	
18-25		18-27	22-26	26 23	A
3 7		16 11	3 8	32-27	
9-13		27-31	15-22	23 18	17 13
D 331 7 10		26 22	8 15	27-23	12-16
15-18		15-18	26-31	18 14	13 9
10 17		22 15	23 19	23-18	4- 8
13-22		10-19	5- 9	10 7	B B 9 6
D 332 27 24		17 10	15 18		15-18
20-27		6-15	22-26		22 15
32 14		13 6	30 23		11-27
1- 6		1-10	31-27		6 2
28 24			18 14		27-31
6- 9			9-18		26 22
14 10			23 14		31-26
9-14			27-23		
10 7			19 15		
14-18			23-18		
7 2					B
18-23					
21 17					28 24
25-29					16-20
17 14					9 6
22-26					20-27
					6 2
					27-31
					2 7
					15-18
Drawn.	B. wins.	B. wins.	B. wins.	Drawn.	B. wins.
Drummond.	J. S. Walker.	Drummond.	R. Frazer.	Drummond.	Drummond.
15-97	15-99	15-99	15-99	18-102	19-106

234	235	236	237	238	239
22 17	3 7	26 22	27-31	19-23	17 14
12-16	14-18	18-23	7 2	2 7	9-18
17 10	7 3	27 18	15-19	10-15	2 9
18-23	23-19	14-23	2 7	25 22	27-31
27 18 ^B	A 21 17	24 19	1- 5	27-32	9 14
20-27	18-23		7 14 ^B	336 28 24	18-23
32 23	25 21		9-18 ^W	337 4- 8	25 22
15-29	19-15		17 14 ^D	338 } 7 11	4- 8
D 333 } 10 7			18-23 ^D	339 }	14 10
B 334 }			25 22	23-26	23-27
D 335 16-19			31-27	11 18	10 7
23 16	A		30 25	32-28	8-12
11-20			23-26	30 23	7 11
7 3	3 7		22 17	28-26	27-32
29-25 ^B	B) 20-24		27-23	18 15	11 18
3 7 ^B	C) 21 17		14 9	26-23	19-23
25-22	18-22		5-14	22 18	18 27
	25 18		17 1	23-14	32-23
	19-16		23-18	17 10	13 9
			21 17	9-14	12-16
				13 9	30 25
	B			6-13	16-20
	7 10			10 7	21 17
	18-22			8-12	31-26
	25 18			7 3	25 21
	19-16			12-16	26-30
				3 7	9 5
	C			16-20	23-19
	7 3			7 11	22 18
	18-23			20-24	30-26
	21 17			11 16	18 14
	24-27			24-27	26-22
	25 21			16 19	17 13
	19-15			D 340 27-32	22-17
				19 23	14 10
				1- 5	19-15
				15 11	21 14
				32-28	15- 6
				11 7	14 9
				28-24	6- 2
				7 2	9 6
				24-20	1-10
				2 6	5 1
				5- 9	2- 7
				6 2	
				20-16	
				2 7	
Drawn.	B. wins.	B. wins.	W. wins.	Drawn.	Drawn.
Drummond.	Drummond.	Drummond.	Anderson.	Anderson.	Anderson
19-108	19-108	19-109	20-112	20-112	20-112

240	241	242	243	244	245
25 22	25 21	30-26	8-11	31-26	23 18
6-10	15-18	3 7	32 23	2 6	14-23
13 9	17 14	16-19	4- 8	10-15	2 7
10-14	18- 9	11 16	2 7	19 10	D 341 8-11
17 10	21 17	20-24	8-12	26-19	7 14
15-13	9-14	7 10	7 16	6 9	
22 18	17 10	24-27	10-15	14-18	
13- 9	6-15	28 24	19 10	10 7	
18 15		19-28	12-26	18-23	
9-14		10 15	10 6	9 14	
15 11			31-27	23-27	
14-10			6 2	7 2	
11 8			27-23	12-16	
10- 7			28 24	2 7	
8 3			23-18	4- 8	
7-11			24 20	7 10	
			18-15	16-20	
			20 16	21 17	
			15-10	27-32	
			16 12	10 7	
			23-31	32-27	
			12 8	7 10	
			31-26	27-32	
			8 3	17 13	
			26-22	8-12	
			2 7	14 17	
			10-15	12-16	
			3 8	17 22	
			14-18	19-23	
			7 11	13 9	
			15-19	16-19	
			8 12	10 14	
			18-23	20-24	
			12 8	22 18	
			23-26	24-27	
			8 3	18 15	
				19-24	
				28 19	
				23-16	
B. wins.	B. wins.	W. wins.	Drawn.	Drawn.	Drawn.
Anderson.	Anderson.	Williams v. Summers.	C. F. Barker v. J. P. Reed.	Wright v. Dempster.	Schaefer v. Dempster.
20-112	20-112	21-115	22-119	22-119	22-119

246	247	248	249	250	251
8-11	19 15	8 12	4 8	16-11	16-20
7 16	10-19	23-26	16-19	15 8	10 6
10-15	23 16	16 11	23 16	4-11	20-27
19 10	12-19	19-15	31-26	14 10	18 14
12-26	7 10	12 8	32 23	11-15	1-10
10 6	14-18	26-31	26- 3	10 7	14 16
31-27	10 15	11 7		12-16	27-31
6 1	26-22	31-26		7 2	17 14
26-30	15 24	7 3		15-18	31-26
1 6	18-23	14-10		2 7	14 10
30-26	24 19	21 17		16-20	26-23
6 10	23-27	26-23		7 10	10 6
14-18	19 15	8 4		18-22	8-12
21 17	27-32	23-19		10 15	16 20
	28 24	3 8		22-26	23-19
		19-16		15 18	6 2
		8 12		26-31	19-15
		16-11		18 23	2 6
		12 8			15-11
		10- 6			6 10
		8 12			12-16
		6- 9			20 24
		12 8			16-20
		9-13			24 27
		17 14			
		11- 7			
		8 3			
		7- 2			
Drawn.	Drawn.	B. wins.	B. wins.	W. wins.	W. wins.
Williams v. Summers.	C. F. Barker v. G. W. Dearborn.	C. F. Barker v. J. P. Reed.	Dr. T. Brown.	Allen v. Moore.	J. P. Reed.
22-119	22-119	22-119	23-120	23-121	23-121

264	265	266	267	268	269
7-11	9-14	9-14	21 17	30 26	22 17
26 23	32 27	28 24	5- 9	9-14	11-16
11-15	5- 9	2- 7	17 13	B 360 26 23	B 362 27 24
32 28	30 26	24 19	2- 6	1- 5	19-23
15-24	2- 7	15-24	32 27	B 361 22 17	24 19
28 19	24 20	22 18	19-24	11-16	16-20
9-14	w 358 } 1- 5	5- 9	28 19	B A 23 18	19 15
22 17	w 359 }	18 15	15-24	14-23	23-26
5- 9	23 19	11-27	22 18	27 11	15 10
29 25	15-24	20 2	24-28	16-23	26-30
4- 8	28 19	12-16	18 15	31 27	25 21
30 26	w A 11-15	32 23	10-19	8-15	30-26
8-11	27 24	16-20	27 24	27 1.	29 25
31 27	w B 7-11	2 7	11-15	7-16	5- 9
D 353 } 11-16	26 22	1- 5	20 11		17 13
D 354 }	15-18	23 19	28-32		9-14
25 22	22 15		23 16		13 9
D 355 14-18	11-18		12-28	A	14-18
22 15	19 15		26 23		10 6
2- 7			9-14	24 20	26-22
B 356 26 22			11 7	15-24	
D 357 7-11			6-10	20 11	
15 8	A		7 2	8-15	
10-14			15-18	27 20	
17 10	14-18		2 6	15-19	
6-31	17 14			23 16	
13 6	10-17			12-19	
1-10	21 14			32 27	
23 18				5- 9	
31-27				17 13	
22 17				19-23	
	B			13 6	
	8-11			2- 9	
	26 22			27 18	
	14-18			24-23	
	17 14			20 16	
	10-26			9-14	
	19 1			28 24	
				14-17	
Drawn.	W. wins.	W. wins.	Drawn.	B. wins.	B. wins.
Dr. C. H. Irving.	R. Walker.	J. P. Reed.	J P. Reed.	E. La Rue.	Drummond.
2-35-135	2-35-135	2-35-136	2-35-136	3-38-140	4-43-144

270	271	272	273	274	275
32 27	15 19	29 25	17 13	12-16	9-13
8-12	26-30	7-11	16-20	32 23	2 9
26 23	10 7	6 10	19 16	16-20	5-14
19-26	30-26	11-16	20-27	2 7	29 25
30 23	7 2	27 24	16 7	24-27	24-28
12-16	22-18	20-27	2-11	31 24	25 22
B A 17 13	2 7	10 15	31 24	20-27	28-32
10-17	26-22	19-23	15-18	7 10	22 18
21 14	7 11	15 19	22 15	w 363 27-32	
16-19	1 5	27 21	11-27	23 19	
23 16	11 7	19 26	32 23	32-27	
7-10		13-17	8-11	19 16	
14 7			25 22	27 32	
2-20			11-16	10 15	
			22 18	32-27	
			5- 9	21 17	
			18 15	27-31	
A			10 19	26 22	
			24 15	31-27	
24 20			4- 8	15 19	
15-19			23 19	9-13	
20 11			16-23	17 14	
7-16			26 19	1- 6	
14 7			14-18	29 25	
2-11			28 24	w 364 } 27-32	
23 18			18-23	w 365 }	
16-20			15 10	19 15	
18 14			6-15	8-12	
6- 9			19 10	15 19	
14 7 0			9 14	32-28	
9-13			24 19	1 11	
17 14			8 11	28-32	
11-15			10 7	25 21	
10 6			23-27	32-28	
15-18			7 3	11 7	
6 2			27-31	4- 8	
19-23			3 8	7 2	
			11-16	6- 9	
			19 15	30 25	
			13-20	9-18	
			15 10	22 15	
			12-16	5- 9	
			10 7	2 7	
			16-19		
			7 2		
			14-18		
B. wins.	B. wins.	B. wins.	Drawn.	W. wins.	W. wins.
Drummond.	Drummond.	Drummond.	Beattie v. Bryden.	Drummond.	Drummond.
4-43-146	4-46-149	4-48-151	7-55-158	7-55-164	7-55-164

288	289	290	291	292	293
14-18	22 17	14-18	16 12	31 26	2- 6
26 23	13-22	23 14	w 371 11-16	2 6	12 8
9-14	26 17	15-18	12 8	29 25	15-18
12 8	1- 6	22 8	4-11	15-18	22 15
4-11	30 26	4-11	26 23	22 8	w A 13-22
24 19	6- 9	14 9	6- 9	13-31	8 3
15-24	16 12		24 19	8 3	w B 10-26
28 12	9-18		15-24	9-13	3 1
11 16	12 8		28 12	23 19	9-13
30 26	11-16		11-16	14-18	1 6
5- 9	8 3		12 8	19 15	26-3)
26 22	4- 8		7-11	10-19	6 9
	3 19		8 3	24 15	14 18
	18-23		11-15	31-24	9 14
	27 11		3 8	28 19	18-23
	20 27		15-19		27 18
	31 24		8 12		20-27
	7-30		19-26		31 24
	24 19		12 19		11-16
	30-26		25-30		24 20
	28 24		29 25		16-19
	26-22		14-18		18 15
	17 13		22 6		22-26
	22 18		13-29		14 18
	29 25		19 23		26-31
	18-15		9-14		15 11
	25 22		6 1		31-27
	15 11		29-25		20 16
	22 18		1 5		27-32
	5- 9		25-22		18 15
	13 6				19-23
	2- 9				29 25
	24 20				
	9-1?				
	19 16				
	11- 8				
					A
					11-18
					8 3
					13-22
					21 17
					B
					11-18
					21 17
W. wins.	B. wins.	W. wins.	Drawn.	Drawn.	W. wins.
Drummond.	Bailey v. Bugbee.	Drummond.	R. McCullough.	Wyllie v. Woolhouse.	T. Finn.
7-57-170	7-57-171	7-57-174	7-57-175	7-57-175	7-57-175

294	295	296	297	298	299
2- 6	13-22	15-19	11-15	17 13	26 22
3 7	18 11	8 12	25 11	10-15	8-12
11-16	10-15	19-26	8-15	D A 29 25	17 13
22 18	8 8	12 19	26 23	14-18	10-15
13-22	15 19	9-14	15-18	26 22	22 17
18 11	8 12	19 23	23 14	11-16	14-18
9-13	19-26	26-30	9-18	13 9	17 14
21 17	12 19	27 24	29 25	8-12	11-16
14-21	9-13	20-27	6- 9	31 26	14 10
7 14	19 23	23 32	31 26	4- 8	16-19
21-25	26-30	v A 30-26	4- 8	26 23	10 7
23 18	11 8	32 27	17 14	15-19	19-23
25-30		26-30	1- 6	13 14	
18 15		27 23	B 373 26 22	19-24	
			8-12		
			22 15		
			9-18		
		A	21 17	A	
			D 374 6- 9		
		22-25	15 11	27 23	
		29 22	9-13	11-16	
		30-25	17 14	29 25	
		31 26	13-17	8-12	
		25-18	25 21	25 22	
		26 30	12-16	16-19	
		18-27	11 7		
		32 23	16-19		
			7 2		
			17-22		
			2 7		
			22-26		
			7 11		
			19-24		
			28 19		
			26-31		
W. wins.	W. wins.	W. wins.	Drawn.	Drawn.	Drawn.
T. Finn.	T. Finn.	T. Finn.	J. P. Reed.	W. Taylor.	J. Deans.
7-57-175	7-57-175	7-57-175	7-58-179	7-58-179	7-58-179

300	301	302	303	304	305
8-12	8-12	8-12	5- 9	17 13	11 7
17 13	30 26	22 18	16 12	4- 8 w 385	24-28
10-15	4- 8	5- 9	8-11 B 382	22 18	7 3
D A 26 23	24 19	30 25	12 8	15-22	32-28
11-16	15-24	12-16 w 381	11-15	26 17	26 23
D 375 25 22	28 19	19 12	8 3	11-16	5- 9
16-19 w 376	11-15	11-16 w A	22-26 B 383	29 25	3 7
23 16	19 16	27 24	31 22	16-19	4- 8
12-19	12-19	20-27	15-18	23 16	17 13
22 17	23 16	31 24	22 15	12-19	1- 5
14-18	8-12	16-20	10-26	24 15	22 18
13 9	16 11	24 19	17 10	10-19	32-28
19-23 D 377	15-18	20-24	6-15	17 10	21 17
27 24	22 15	18 15	30 23	6-15	14-21
20-27	10-19	24-27	1- 5	25 22	7 14
31 24	11 7	15 11	3 7	1- 6	8-12
	19-24	27-32	15-18 B 384	21 17	23 19
	7 3	11 7	23 14	5- 9	6-10
A	24-28 w 380	32-27	9-18	22 18	14 7
	3 7	7 2	29 25	15-22	32-28
w 378	12-16	27-18		27 24	
	7 11	25 22		20-27	
26 22	28-32		A	31 15	
11-16	27 23				
27 23	32-27 w 379				
16-19	31 24		15-18		
23 16	20-27		3 7		
12-19	11 20		1- 5		
22 17	27-31		7 11		
14-18			20-24		
17 14			27 20		
19-23			18-27		
21 17			31 24		
23-27			22-25		
31 24			29 22		
20-27			14-18		
13 9			22 15		
27-31			10-28		
25 21			17 13		
30-26					
Drawn.	Drawn.	W. wins.	W. wins.	Drawn.	Drawn.
J. Deans.	J. A. Kear.	Swan and Adamson.	Swan and Adamson.	W. Taylor.	J. P. Reed.
7-58-179	7-59-182	7-59-183	7-59-183	7-59-184	7-59-184

306	307	308	309	310	311
32 27	29 25	22 17	23 18	28 24	22 18
12-19	10-15	15-19	12-16	15-19	1- 6
27 20	32 28	23 16	26 23	24 15	B 391 } 26 23
19-24	24-27	12-19	15-19	6- 9	B 392 } 10-14
20 16	31 24	25 22		13 6	18 9
9-14	16-20	6-10		1-19	5-14
	24 19	22 18		23 16	D 393 } 19 15
	15-24	10-15		12-19	12-16
	28 19	18 14		22 18	25 22
	9-14	15-18		D 387 } 19-24	14-17
B 386	18 9	14 9		D 388 } 18 14	22 18
	5-14	5-14		D 389 } 17-22	11 8
	17 10	17 10		24-27	4-11
	6-24	18-23		14 10	15 8
	22 18	10 7		27-31	6-10
	24-27	21-25		B 390 } 25 22	D 394 } 8 3
	25 22	30 21		5- 9	22-26
	27-31	23-30		10 6	3 8
	18 15			9-14	26-31
	31-27			6 1	8 12
	30 26			14-18	
	27-31			22 15	
	26 23			31-22	
	31-27			15 10	
	23 18			22-18	
	27-23			10 7	
	22 17			4- 8	
	23-14				
B. wins.	B. wins.	B. wins.	B. wins.	Drawn.	Drawn.
Drummond.	Drummond	Drummond.	Drummond.	Drummond.	Drummond.
12-82-206	12-82-206	14-92-211	14-92-211	14-92-211	14-92-211

312	313	314	315	316	317
22 17	1- C	18 15	1- 6	13 12	5- 9
2- 6	18 C	12-16	13 9	27 31	22 18
	5-14	19 12	6-13	25 22	20-24
	19 15	5- 9	14 10	10-15	11 8
	12-16		17-22	26 23	4-11
	25 22		25 18	31-27	15 8
			13-17	23 18	24-27
	Same as		18 15	15-19	D 396 26 22
	Var. 311		17-22 ^B	A 12- 8	27-31
	at		23 18	2- 7	17 14
	8th move.		22-25	11 2	19-23
			D 395 11 8	4-11	14 5
			4-11	2 9	31-26
			15 8	5-23	22 17
			25-29		26-22
			8 4		B 397 18 15
			29-25		23-26
			4 8	A	30 23
			25-22		6- 9
			19 15	18 15	13 6
			12-16	19-23	1-26
			8 11		17 14
			16-20		22-18
			10 7		14 10
			5- 9		26-31
			11 16		5 1
			2-11		31-27
			16 7		8 C
			20-24		2- 6
			7 10		10 7
			24-27		6- 9
			10 14		
			13-17		
			14 9		
			22-17		
			9 6		
B. wins.	Drawn.	B. wins.	Drawn.	B. wins.	Drawn.
Drummond.	Drummond.	Drummond.	R. Walker.	Drummond.	Drummond.
14-92-211	14-92-211	14-92-211	14-92-211	14-92-214	14-92-217

318	319	320	321	322	323
22 18	19 15	17 13	31 27	31 26	15-19
24-27	10-19	8-11	D 399 15-19	4- 8	23 16
1 8	17 10	13 6	23 16	20 16	12-19
4-11	19-24	2- 9	12-19	12-19	20 16
15 8		32 28	27 23	23 16	w 401 10-15
27-31		1- 5	19-26	8-11	16 11
26 22		28 24	30 23	16 7	w 402 19-24
19-23		9-13	w 400 10-15	2-11	22 17
8 4		27 23	22 17	26 23	w 403 14-18
23-27		5- 9	15-18	11-16	17 14
B 398 4 8		22 18	17 10	30 26	18-22
27-32		13-17	18-27	15-18	25 18
8 11		15 16	32 23	22 15	15-22
32-27		12-26	6-15	10-19	14 5
11 8		24 19	13 6	25 22	22-25
		14-23	1-10	19-24	26 23
		21 7	21 17	22 17	24-28
			4- 8	24-27	23 19
			25 22	17 10	25-30
			8-12	6-15	19 16
				13 6	
				1-10	
				26 22	
				27-31	
				23 18	
				15-19	
				32 28	
				16-20	
				18 15	
				10-14	
				22 17	
Drawn.	B. wins.	Drawn.	Drawn.	Drawn.	W. wins.
R. Walker.	Drummond.	J. P. Reed.	H. Z. Wright.	J. Dickson v. H. Montgomery.	J. Swan.
14-92-217	14-93-218	14-93-218	14-94-220	14-94-220	14-94-220

324	325	326	327	328	329
26 23	15-18	6- 9	22-25	6- 9	19 16
11-16	26 23	D 404 15 10	29 22	14 10	11-15
31 26	18-27	18-23	18-25	9-14	12 8
16-20	32 23	27 18	30 21	17 13	4-11
32 27	11-15	9-14	8-11	14-18	16 7
1- 5	25 22	18 9	15 8	10 7	22-25
22 17	15-18	5-21	4-11	18-23	29 22
15-18	22 15	10 7	17 14	7 3	18-25
26 22		8-11	6- 9	11-16	7 3
20-24		7 3	14 10	3 7	15-18
22 15		11-15	11-15	22-26	3 7
24-31		3 7	10 7	7 10	25-29
23 19		15-19	15-18		7 11
14-18		D A 32 27	21 17		29-25
17 14		4- 8	18-22		11 15
10-17		7 10	7 3		25-22
21 14		8-11	9-13		30 25
31-26		10 7			22-29
D A } 14 10		11-15			15 22
D B } 9-14		27 23			5- 9
10 1		19-26			28 24
26-23		30 23			9-13
D C 1 6		22-26			24 19
23-16		7 10			6- 9
D D 25 21		26-31			19 16
18-23		10 19			1- 5
					22 26
					14-18
A		A			
25 21		7 11			
26-23		19-23			
19 16		11 15			
18-22		4- 8			
		15 18			
B		23-26			
19 16		18 25			
26-22		8-11			
25 21		30 23			
18-23		21-30			
C					
19 16					
14-17					
D					
6 10					
19-16					
Drawn.	W. wins.	Drawn.	Drawn.	Drawn.	B. wins.
F. Dunne.	J. Swan.	J. Deans.	J. Deans.	J. Deans.	Drummond.
14-94-220	14-94-220	15-97-226	15-97-226	15-97-226	15-97-228

330	331	332	333	334	335
11-16	7 11	21 17	23 18	28 24	11-15
8 3	25-29	1- 6	29-25	16-20	7 3
18-23	11 9	30 21	18 14	24 19	29-25
27 18	5-14	6- 9	25-22	11-15	3 7
14-23	30 26	17 14	B 407 21 17	19 16	5- 9
8 8	29-25	22-26	16-20	29-25	13 6
B 405 } 22-26	26 23	21 17	10 6		1-10
B 406 } 29 25	25-22	9-13			7 14
26-31	23 19	14 10			15-18
25 22	22-26	13-22			23 19
23-26	19 16	27 24			16-23
30 23	13-17				21 17
31-26	16 11				
23 18	17-22				
26-17	11 7				
21 14	22-25				
16-19	7 2				
8 11	25-30				
19-23	2 7				
11 16	30-25				
23-26	7 2				
16 19	25-22				
26-30	2 7				
18 15					
9-18					
28 24					
20-27					
32 14					
30-26					
Drawn.	Drawn.	Drawn.	Drawn.	B. wins.	Drawn.
J. Deans.	J. Deans.	J. Deans.	Drummond.	Drummond.	W. Strickland v. G. Jewett.
15-97-228	15-97-228	15-97-228	19-108-234	19-108-234	19-108-234

342	343	344	345	346	347
2- 6	6- 9	24 19	15-18	10-15	14-18
20 11	13 6	8-11	22 6	19 10	23 7
8-15	11-15	28 24	13-22	16-19	16-23
3 7	18 9	4- 8	24 20	23 16	7 3
22-26	15-24	24 20	11-16	12-19	8-11
31 22	23 19	25-22	20 11	10 7	3 8
15-18	8-11	17 26	8-24	14-18	11-15
22 15	6 2	21-25	28 19	22 15	8 11
10-26	24-28	30 21	4- 8	13-22	15-18
7 2	2 7	23-30	6 2	7 3	22 15
6- 9	11-15	21 17	22-26	8-11	
2 6	7 14	30-26	2 6	3 7	
9-12	15-24	32 27	26-31		
6 9	14 18	26-22	6 9		
14-18	24-27	17 13	14-17		
9 14	9 6	22-18	23 18		
18-22	27-31	13 9	8-11		
14 18	6 2	18-14	9 13		
	28-32	9 6	17-22		
	2 7	14-10	18 14		
	32-27	6 1	22-25		
		11-15	13 17		
		27 24	25-29		
		15-18	17 22		
			11-16		
			19 15		

W. wins.	W. wins.	B. wins.	W. wins.	W. wins.	W. wins.
Anderson.	Geo. Dick.	Potterdon.	Geo. Dick.	Geo. Dick.	Geo. Dick.
1-25-125-252	1-27-128-255	1-27-128-257	1-27-128-258	1-27-128-258	1-27-128-256

348	349	350	351	352	353
4- 8	16-19	18-23	15 10	22-26	1- 5
28 24	7 3	27 18	w 412 22-26	30 23	26 22
14-18	25-29	20-27	30 23	25-30	11-15
23 7	15 10	32 23	D 413 25-30	9 13	27 24
16-23	19-23	w A 12 16	23 19	17-22	2- 7
24 19	10 6	15 10	w 414 17-22	13 17	24 20
23-26	w A 29-25	17-22	10 7	22-26	15-24
30 23	6 2	18 15	22-26	17 22	23 19
21-25	25-22	22-26	7 3	26-31	14-18
7 2	2 6	14 18	30-25	15 10	22 15
25-30	22-17	26-31	D A 19 16	8-11	24-27
22 18	24 20	23 19	12-19	22 18	20 16
13-22	17-13	16-23	3 12	30-25	27-31
2 7	20 16	18 27	19-23	18 14	15 11
22-26	12-19	31-24	27 18	25-22	31-27
7 16		28 19	20-27	10 7	11 2
26-31			32 23	21-25	27-24
18 15			25-22	7 2	19 15
30-26	A			25-30	10-19
23 18		A		2 6	16 11
26-23	21-25			11-16	19-23
18 14	30 21	8-11	A	6 9	2 7
31-26	23-21	15 8		30-26	24-19
14 10	6 2	4-11	14 18	9 6	7 10
26-22	18-22	14 9	26-30	23-19	
10 7	2 6	17-22	19 16	24 15	
23-27	14-18	23 19	12-19	31-24	
7 2	6 10	11-16	24 19	28 19	
27-24	22-25	19 15		16-23	
2 7	10 15	16-19		14 18	
24-27	18-22	9 14			
7 11	15 19	12-16			
27-24	8-11	14 17			
11 4	24 20	22-26			
22-18		30 23			
16 11		19-26			
W. wins.	W. wins.	W. wins.	Drawn.	W. wins.	Drawn.
Strickland.	Geo. Dick	Geo. Dick.	Geo. Dick.	Geo. Dick.	Dr. C. H. Irving.
1-27-128-258	1-27-128-261	1-27-128-261	1-27-128-261	1-27-128-261	2-35-135-264

354	355	356	357	358	359
2-7	16-20	15 11	16-20	15-18	15-19
19 15	22 18	16-20	22 18	26 22	23 16
11-18	2-7	11 2	12-16	W A 1-5	12-19
26 22	18 15	10-14	19 12	22 15	20 16
12-16	1-5	17 10	10-26	11-18	11-20
22 15	15 11	6-31	27 23	20 16	27 24
10-26	7-16	13 6	26-31	12-26	20-27
17 3	26 22	31 22	23 19	31 15	31 15
26-31	14-18	2 7	31-26	10-19	10-19
27 24	22 15	1-10	19 16	17 3	17 3
	9-14	7 14		8-11	8-12
	15 11	22-18		21 17	3 7
	14-18			11-15	
				25 22	
				A	
				11-15	
				23 19	
Drawn.	Drawn.	B. wins.	Drawn.	W. wins.	W. wins.
Dr. C. H. Irving.	Dr. C. H. Irving.	Dr. C. H. Irving.	Dr. C. H. Irving.	R. Walker.	R. Walker.
2-35-135-264	2-35-135-264	2-35-135-264	2-35-135-264	2-35-136-265	2-35-136-265

360	361	362	363	364	365
27 23	23 18	17 14	27-31	8-11	6-10
11-16	14-23	16-20	30 25	16 7	14 7
24 20	27 18	14 10	31-22	6-10	8-11
15-24	5- 9	4- 8	25 18	14 9	16 12
28 19	31 27	25 22	8-12	5-14	11-16
1- 5	9-13	5- 9	23 19	19 23	19 23
20 11	21 17	B A 29 25	9-13		
8-24	11-16	9-14	18 14		
32 28	18 11	25 21	13-17		
7-11	16-23	8-12	29 25		
28 19	27 18	22 17	4- 8		
11-15	8-15	14-18	19 15		
19 16	18 11	17 13			
12-19	7-16	19-23			
23 16	24 20				
14-18	16-19				
22 17	32 27				
18-23	2- 6	A			
26 19	27 24				
15-24	19-23	10 6			
16 11	24 19	9-13			
5- 9	6- 9	6 1			
17 13	20 16	2- 7			
9-14	9-14	1 6			
13 9	19 15	7-11			
10-15	14-21	6 10			
9 5	15 6	8-12			
24-28	12-19	29 25			
5 1		11-16			
28-32					
1 5					
15-18					
5 9					
18-23					
B. wins.	B. wins.	B. wins.	W. wins.	W. wins.	W. wins.
E. La Rue	E. La Rue.	Drummond.	Drummond.	Drummond	Drummond.
3-38-140-268	3-38-140-268	4-43-144-269	7-55-164-274	7-55-164-274	7-55-164-274

366	367	368	369	370	371
24-28	19-26	22 17	30 26	14-18	14-18
25 22	30 23	14-18	27-31	13 6	26 23
1- 5	8-15	17 14	26 22	18-25	18-25
31 27	28 19	10-17	31-27	29 22	29 22
5- 9	15-24	21 14	18 14	2- 9	11-16
17 13	22 18	18-22	9-18	12 8	23 18
10-15	24-28	26 17	22 15	11-16	16-19
13 6	18 9	9-18	7-11	8 3	18 11
w A 15-18	28-32	24 19	16 7	9-14	7-16
22 15	21 17	15-24	2-18	26 23	24 15
11-18	10-15	28 19	17 14		10-19
20 11	17 13	6-10	27-23		12 8
8-15	32-28	19 15	21 17		4-11
30 26	9 6	10-19	18-22		27 24
	2- 9	27 23	25 18		20-27
	13 6	18-27	5- 9		31 8
	28-24	31 8			6-10
A		4-11			28 24
		17 14			16-20
15-19		11-15			24 19
22 17		16 12			20-24
19-26		15-19			8 3
30 23		12 8			24-27
		19-23			3 8
		8 3			27-31
		7-10			8 11
		14 7			31-26
		2-11			11 16
		3 8			26-30
		11-16			19 15
		8 12			10-19
		16-19			16 23
		12 16			
		20-24			
		25 22			
		24-28			
		22 18			
		28-32			
		18 14			
		32-28			
		14 10			
		19-24			
		16 19			
		23-27			
		19 23			
		27-32			
W. wins.	Drawn.	Drawn.	Drawn.	W. wins.	W. wins.
Drummond.	J. K. L. Sinster.	J. P. Reed.	J, P. Reed.	Drummond.	R. McCullough.
7-55-165-277	7-55-167-284	7-57-170-285	7-57-170-285	7-57-170-287	7-57-175-291

372	373	374	375	376	377
27 24	28 24	12-16	13 9	11-16	15-19
20-27	18-23	17 13	15-19	22 18	11 8
31 24	26 19	16-19	25 22	5- 9	19-24
30-25	9-18	25 21	19-26	29 25	8 3
22 18	19 15	18-22	22 17	8-11	24-28
13-22	6- 9	21 17	1- 5	25 22	3 7
24 20	21 17	5- 9	17 10	1- 5	w 415 28-32
14-23	9-13	15 11	5-14	22 17	27 23
19 17	17 14	22-25	31 22		32-27
25-30	13-17	11 7	16-19		31 24
17 22	25 21	25-30	10 7		20-27
9-14	17-22	7 2	4- 8		22 18
20 16	14 10	30-25	7 3		w 416 6- 9
10-15	22-26	17 14	8-11		13 6
22 17	10 7	9-18	3 7		27-31
14-18	26-31	2 9	11-16		18 9
	7 3	25-22	27 24		31-22
	8-12	9 14	20-27		7 14
	3 7		7 11		1-17
	31-26		16-20		21 14
	7 10		11 16		22-17
	26-23		19-23		14 10
	15 11		16 19		5-14
	23-32		23-26		23 19
	24 19		19 23		17-22
	32-27		27-31		10 7
	19 15		23 30		22-18
	27-31		12-16		7 3
	21 17		22 17		14-17
	18-22		14-18		3 7
	10 14		17 14		17-22
	22-26		18-23		7 11
	15 10		14 10		22-26
	26-30		23-27		19 15
	11 7		10 7		
	30-25		16-19		
	7 3		7 3		
			19-23		
			3 7		
			31-26		
			30 25		
Drawn	B. wins.	Drawn.	Drawn.	W. wins.	Drawn.
R. McCullough.	J. Labadie v. J. P. Reed.	J. P. Reed.	J. Deans.	J. Deans.	J. A. Kear.
7-57-175-291	7-58-179-297	7-58-179-297	7-58-179-300	7-59-183-301	7-59-183-301

384	385	386	387	388	389
22 17	4- 8	17 10	5- 9	26 22	25 22
5- 9	7 2	6-24	B 417 } 25 22	24-27	24-27
31 26	5- 9	18 15	B 418 } 19-24	22 17	22 17
8-12	2 7	24-27	18 15	27-31	27-31
27 23	24-28	22 18	24-27	B 419 25 22	26 22
12-16	17 13	27-31	22 18	31-27	31-27
	28-32	11 8	27-31	18 14	B 420 18 14
	27 23	4-11	26 22	27-23	27-24
		15 8	31-27	14 9	14 9
		32-27	11 8	5-14	5-14
		18 15	4-11	17 10	17 10
		27-23	15 8	23-19	
		15 11	9-13	10 7	
		5- 9	18 15	4- 8	
		8 3	27-23		
		9-13	15 11		
		11 8			
		20-24			
		8 4			
		24-27			
		4 8			
		27-31			
		8 11			
		31-27			
		3 7			
		2- 6			
		7 3			
		1- 5			
		3 7			
		6- 9			
		7 2			
		9-14			
		2 7			
		23-19			
B. wins.	W. wins.	B. wins.	Drawn.	Drawn.	Drawn.
Drummond.	A. Sheehan.	Drummond	Drummond.	R. Walker.	R. Walker.
7-59-184-304	7-59-184-305	12-82-206-307	14-92-211-310	14-92-211-310	14-92-211-310

390	391	392	393	394	395
26 22	25 22	26 22	25 22	22-26	10 7
31-26	21-25	2- 7	14-17	18 15	25-29
30 23	30 21	11 2	22 18	26-31	7 3
21-30	2- 7	4- 8	17-22	23 18	29-25
23 19	11 2	2 9	18 14	31-27	3 7
30-26	4- 8	5-23	22-25	15 11	25-22
22 17	2 9	22 18	14 9	6-10	7 10
26-23	5-30	23-26	25-29	8 3	22-17
19 16	22 18	30 23	11 7	27-23	11 8
23-19	8-11	21-30	2-11	3 8	4-11
16 12	21 17	18 15	9 2	23-14	15 8
19-15	30-25	10-14	29-25	11 7	17-22
	18 14	15 10	2 7		10 15
	25-21	30-26	11-16		2- 7
	14 17	10 7	7 11		18 14
	21-14	26-31	16-20	A	7-11
	7 3	19 15	23 18		15 10
	14-10	31-27	25-22	2- 7	22-18
		23 19	18 14	11 2	10 7
		27-23	20-24	27-23	18- 9
			11 15	2 9	7 16
			24-28	23- 5	9-14
			14 10		8 3
			28-32		5- 9
			10 7		
			32-28		
			7 3		
			28-24		
			3 7		
			24-20		
			7 11		
B. wins.	B. wins.	B. wins.	Drawn.	Drawn.	Drawn.
Drummond.	Drummond.	Drummond	W. Taylor.	Drummond.	R. Walker.
14-92-211-310	14-92-211-311	14-92-211-311	14-92-211-311	14-92-211-311	14-92-211-315

396	397	398	399	400	401
18 14	18 14	28 24	15-18	4- 8	2- 7
9-18	23-26	27-32	22 15	22 17	22 17
26 23	30 26	24 19	10-26	2- 7	1- 5
19-26	6- 9	32-27	30 23	23 19	16 12
30 14	13 6	19 16	1- 5	7-11	7-11
21-25	2-27	27-23	23 18	19 16	12 8
14 9 ^B	A 17 13		14-23	11-15	11-15
1- 5	22-17		27 18	16 12	8 3
17 14	8 3		D 422 } 6-10	8-11	14-18
25-30	27-31		D 423 }	12 8	32 27
8 3	3 7		13 6	15-18	
30-25	17-14		2- 9	8 3	
3 7	28 24		25 22	11-15	
	31-27		D 424 9-13	3 7	
	24 19		32 27	15-19	
	27-23		4- 8	20 16	
	19 16		27 23	19-23	
	23-19		8-11	16 12	
	16 11		23 19	23-26	
	19-15		10-14	12 8	
	11 8		18 9	26-30	
	21-25		5-14	8 3	
	8 3		21 17	30-26	
	25-30		14-21	3 8	
	3 8		22 18	26-22	
	30-26			8 11	
				22-29	
				11 15	
				10-19	
				17 10	
				6-15	
				13 6	
				1-10	
				7 16	
	A				
	17 14				
	22-18				
	14 10				
	18-15				
	10 7				
	15-11				
Drawn.	B. wins.	B. wins.	Drawn.	W. wins.	W. wins.
Drummond.	Drummond.	Drummond.	J. P. Reed. v. H. Z. Wright.	H. Z. Wright.	J. Swan.
14-92-217-317	14-92-217-317	14-92-217-318	14-94-220-321	14-94-220-321	14-94-220-323

402	403	404	405	406	407
1- 5	15-18	17 14	8 11	8 12	10 7
31 27	17 10	22-25	26-31	26-31	22-18
6-10	6-15 ^D	A 30 21	28 24	12 26 ^B	A 7 3
13 6	13 6	8-11	20-27	31-22	18- 9
2- 9	1-10	15 8	11 20		13 6
11 7	26 22	4-11	31-26		1-10
4- 8 ^w	A 18-23	14 10	20 24		3 8
7 2	22 17	18-22	27-31		11-15
8-11	24-28	10 7	29 25		21 17
2 6	17 14	11-15	9-13		16-20
9-13	10-17	7 3	25 22		8 11
27 23	21 14	15-18	26-17		15-18
19-24		21 17	21 14		11 7
32 28		22-26	1- 6		10-15
24-27		17 13			17 13
23 19	A				15- 9
15-24					
6 8	24-28				
	31 27	A			
	10-14				
	22 17	29 22			A
		18-25			
		30 21			13 9
		9-18			18-22
		27 24			7 3
		20-27			16-20
		32 14			3 7
					11-16
					7 10
					22-18
					21 17
					18-22
					17 13
					22-18
W. wins.	W. wins.	Drawn.	B. wins.	B. wins.	B. wins.
R. A. Davis.	J. Swan.	J. Deans.	J. Deans.	J. Deans.	J. P. Reed.
14-94-220-323	14-94-220-323	15-97-226-326	15-97-228-330	15-97-228 330	19-108-234-333

408	409	410	411	412	413
11 7	20 16	7 11	7 10	8-11	8-11
18-14	12-19	28-15	23-26	10 7	10 7
7 2	15 24	11 27	10 19	22-26	11-16
4- 8	9-14	19-15	9-14	30 23	14 9
2 7	17 10	27 23	17 10	25-30	17-22
8-12	6-15	8-12	6-24	7 3	9 14
7 11	13 9	23 18	22 18	30-25	25-29
14-10	23-19	15-10	24-27	3 8	14 17
11 8	24 27	D 425 17 14	25 22	11-15	22-26
12-16	15-18	10-26	26-30	8 11	17 22
8 11	9 5	25 22	18 14	15-18	26-31
16-20	18-22	26-17	30-25		7 2
11 16	27 32	21 5	22 17		21-25
20-24	22-26		25-22		2 7
16 19	32 27		14 10		25-30
24-28	26-31		28-24		7 11
19 23	27 32		10 7		30-25
10-14	19-23		24-19		23 18
23 26	32 28		17 14		25-30
14-18	31-27		22-18		27 23
26 30	28 32		14 10		20-27
18-22	27-24		19-15		11 20
21 17	32 28		7 2		30-26
22-18	23-19		15- 6		22 17
30 25	28 32		2 9		26-19
1- 6	24-28		27-31		32 16
25 21	21 17		21 17		12-19
28-32	28-24		32-27		
21 25	32 28		9 5		
32-27	24-27		18-15		
25 21	28 32		5 9		
27-23	27-23		27-23		
21 25	32 28		17 14		
23-26	23-18		23-19		
25 21	28 32		9 5		
26-30	18-22		15-11		
	17 13		14 10		
			19-15		
			5 9		
			15- 6		
			9 2		
B. wins.	B. wins.	Drawn.	B. wins.	W. wins.	Drawn.
Anderson.	Anderson.	J. Wyllie.	A. H. Mercer.	Geo. Dick.	Geo. Dick.
20-112-238-336	20-112-238-338	20-112-238-339	20-112-238-339	1-27-128-261-351	1-27-128-261-351

420	421	422	423	424	425
17 13	18 15	4- 8	9-14	4- 8	18 23
27-24	22-26	21 17	18 9	22 17	12-16
18 14	23 18	8-11	5-14	9-14	23 27
24-19	26-31	25 21	25 22	18 9	16-19
	11 8	6-10	4- 8	5-14	27 32
	4-11	13 6	32 27	17 13	19-24
	15 8	2- 9	8-11	10-15	32 28
	31-27	17 14	27 23	13 9	24-27
	18 14	10-17	11-15	15-19	28 24
	27-23	21 14	22 17	9 6	27-32
		11-15	6-10	19-23	24 28
		18 11	13 9	6 2	32-27
		9-18	15-19	8-11	28 32
		11 7	23 16	2 6	27-24
		18-22	12-19	14-18	32 28
		7 2		21 17	24-19
		22-26		18-22	28 32
		2 6		17 14	19-15
		26-31		22-26	32 27
		6 10		14 10	9-14
		5- 9		11-15	D 426 27 23
		10 15		10 7	1- 5
		9-14		26-31	23 26
		32 28		6 10	15-19
		31-26		15-18	26 30
		28 24		32 28	19-24
					30 26
					24-19
					26 30
					19-15
					30 26
					15-11
					26 23
					11-15
					23 26
B. wins.	B. wins.	Drawn.	Drawn.	Drawn.	Drawn.
Drummond.	Drummond.	Heffner v. Barker.	Heffner v. Barker.	Heffner v. Barker.	Dr. C. H. Irving.
14-92-211-310 389	14-92-211-311 393	14-94-220-321 399	14-94-220-321 399	14-94-220-321 399	20-112-238-339 410

426	427	428	429	430	431
27 31	31 27	9 5	9 6	14 10	6 1
14-18	1- 5	11- 7	1-10	2- 7	2- 6
B 427 31 26	27 31	13 9	13 9	10 6	1 5
18-23	18-23	7- 2	11- 7	1-10	10-15
26 19	17 14	21 17	9 6	9 6	5 1
15-24	10-26	2- 7	7- 2	7- 2	6-10
22 18	31 22	17 13	6 1	B 431 13 9	13 9
10- 7	5- 9	7- 2	10-14	10-15	3- 7
18 14	B A 21 17	9 6	1 5	6 1	4 8
24-19	23-27	1-10	2- 6	3- 7	7- 2
14 9	22 26	13 9	5 1	1 5	8 11
7- 2	15-10	10-14	6- 9	7-10	15-18
25 22	26 22	5 1	1 5		11 16
19-15	9-14		9-13		10-14
17 14	25 21		5 1		1 5
15-11	27-31		14-18		18-22
22 18	22 25		1 6		16 19
11- 7	31-27		18-23		22-26
18 15	25 22		6 10		19 23
7- 3	27-24		23-26		26-31
15 11			10 15		23 19
3- 7			26-31		31-26
11 8			15 18		
7- 3	A		31-27		
8 4			18 22		
6-10	22 17		27-23		
14 7	23-26		21 17		
2-11	17 22		13- 9		
D 428 } 21 17	26-30		17 13		
B 429 } 21 17	22 17		9- 6		
11- 7	15-10		22 17		
17 14	17 22		23-18		
7- 2	9-14		17 21		
B 430 4 8	22 17		18-14		
3-12	30-26		21 25		
14 10	25 22		6-10		
	26-30		25 22		
			10-15		

Drawn.

B. wins.

Drawn.

B. wins.

B. wins.

B. wins.

H. Coltherd.

Dr. C. H. Irving.

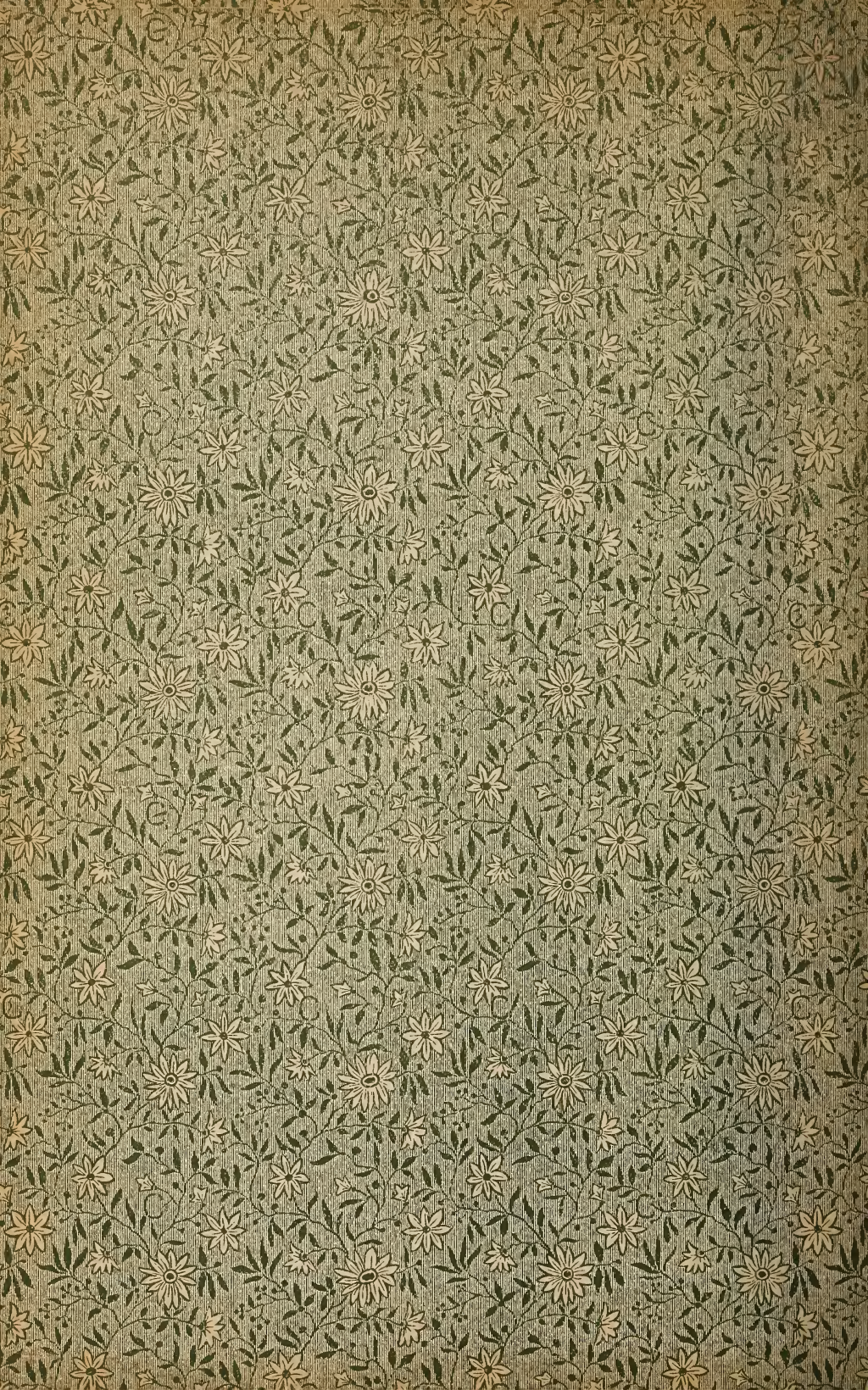
H. Coltherd.

Anderson.

Anderson.

Anderson.

20-112-238-339
410-42520-112-238-339
410-425-42620-112-238-339
410-425-42620-112-238-339
410-425-42620-112-238-339
410-425-42620-112-238-339
410-425-426-430





LC ACQUISITIONS



0 042 450 061 6